

Basic Information

Product Name	Anti-AKT1/3 (Phospho-Y437/434) Antibody
Gene Name	AKT1/AKT3
Source	Rabbit
Clonality	Polyclonal
Isotype	IgG
Species Reactivity	mouse, rat
Tested Application	WB, IHC, ELISA
Contents	Liquid in PBS containing 50% glycerol, 0.5% BSA and 0.02% sodium azide.
Immunogen	Synthesized peptide derived from human Akt1/3 around the phosphorylation site of Y437/434.
Concentration	1 mg/ml
Purification	The antibody was affinity-purified from rabbit antiserum by affinity-chromatography using epitope-specific immunogen.
Dilution Ratios	WB 1:500-1:2000 IHC 1:100-1:300 ELISA 1:20000

Storage

Store at -20°C for one year. For short term storage and frequent use, store at 4°C for up to one month. Avoid repeated freeze-thaw cycles.

Selected Validation Data

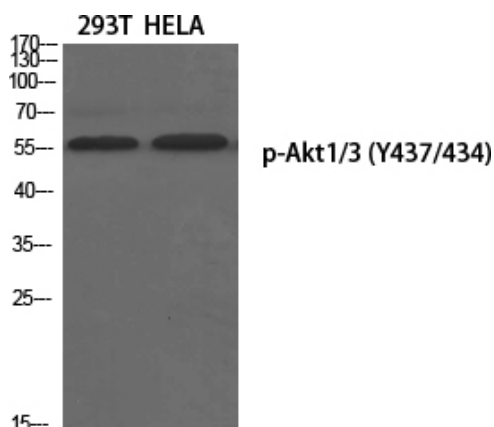


Figure 1. Western blotting validation for Anti-Phospho-Akt1/3 (Y437/434) Antibody A00024Y437

Western Blot (WB) analysis of 293T and HeLa cells using Anti-Phospho-Akt1/3 (Y437/434) polyclonal antibody.

Electrophoresis was performed on a SDS-PAGE gel. To determine SDS-PAGE gel concentration

Product datasheet

Anti-AKT1/3 (Phospho-Y437/434)

Antibody

Catalog Number: A00024Y437

BOSTER

antibody and ELISA experts

BOSTER BIOLOGICAL TECHNOLOGY

Building C21, 3rd and 4th floors, Optics Valley Biomedical Accelerator,
Wuhan East Lake High-tech Development Zone

Web: www.boster.com **Phone:** 027-67845390 **Email:** boster@boster.com
