

Basic Information

Product Name	Anti-ABL1 (Phospho-T735) Antibody
Gene Name	ABL1
Source	Rabbit
Clonality	Polyclonal
Isotype	IgG
Species Reactivity	human, mouse, rat, monkey
Tested Application	WB, IHC, ELISA
Contents	Liquid in PBS containing 50% glycerol, 0.5% BSA and 0.02% sodium azide.
Immunogen	Synthesized peptide derived from human Abl1 around the phosphorylation site of T735.
Concentration	1 mg/ml
Purification	The antibody was affinity-purified from rabbit antiserum by affinity-chromatography using epitope-specific immunogen.
Dilution Ratios	WB 1:500-1:2000 IHC 1:100-1:300 ELISA 1:5000

Storage

Store at -20°C for one year. For short term storage and frequent use, store at 4°C for up to one month. Avoid repeated freeze-thaw cycles.

Selected Validation Data

Product datasheet

Anti-ABL1 (Phospho-T735) Antibody

Catalog Number: **A00133T735**

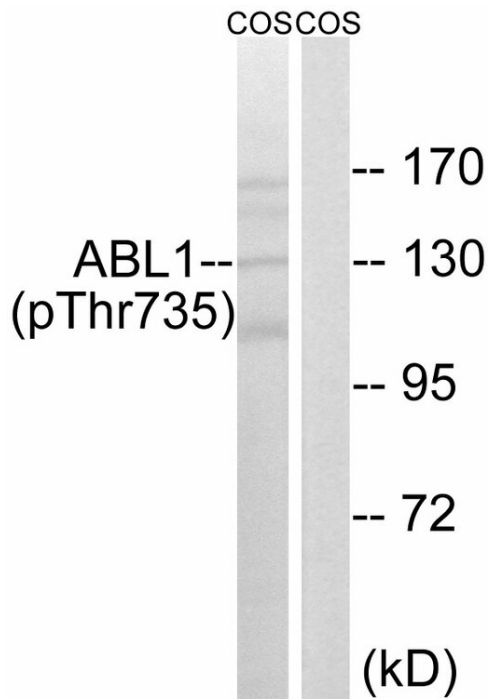
BOSTER

antibody and ELISA experts

BOSTER BIOLOGICAL TECHNOLOGY

Building C21, 3rd and 4th floors, Optics Valley Biomedical Accelerator,
Wuhan East Lake High-tech Development Zone

Web: www.boster.com **Phone:** 027-67845390 **Email:** boster@boster.com



Western blot analysis of lysates from COS7 cells treated with EGF 200ng/ml 30', using ABL1 (Phospho-Thr735) Antibody. The lane on the right is blocked with the phospho peptide.