

## Basic Information

<b>Product Name</b>	Anti-ABL1 (Phospho-Y204) Antibody
<b>Gene Name</b>	ABL1
<b>Source</b>	Rabbit
<b>Clonality</b>	Polyclonal
<b>Isotype</b>	IgG
<b>Species Reactivity</b>	human, mouse, rat, monkey
<b>Tested Application</b>	WB, IHC, ELISA
<b>Contents</b>	Liquid in PBS containing 50% glycerol, 0.5% BSA and 0.02% sodium azide.
<b>Immunogen</b>	Synthesized peptide derived from human Abl1 around the phosphorylation site of Y204.
<b>Concentration</b>	1 mg/ml
<b>Purification</b>	The antibody was affinity-purified from rabbit antiserum by affinity-chromatography using epitope-specific immunogen.
<b>Dilution Ratios</b>	WB 1:500-1:2000 IHC 1:100-1:300 ELISA 1:5000

## Storage

Store at -20°C for one year. For short term storage and frequent use, store at 4°C for up to one month. Avoid repeated freeze-thaw cycles.

## Selected Validation Data

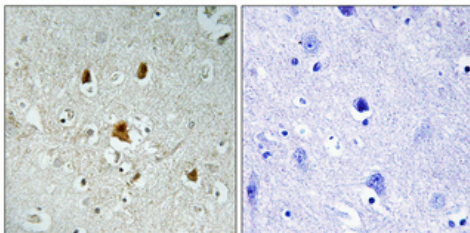


Figure 1. Immunohistochemistry validation of ABL1 using Anti-Phospho-Abl1 (Y204) Antibody (A00133Y204).

Immunohistochemical analysis of paraffin-embedded Human brain. Antibody was diluted at 1:100 (4°C)