

Basic Information

Product Name	Anti-APC1/ANAPC1 (Phospho-S355) Antibody
Gene Name	ANAPC1
Source	Rabbit
Clonality	Polyclonal
Isotype	IgG
Species Reactivity	human, mouse
Tested Application	IHC, ELISA
Contents	Liquid in PBS containing 50% glycerol, 0.5% BSA and 0.02% sodium azide.
Immunogen	Synthesized peptide derived from human APC1 around the phosphorylation site of S355.
Concentration	1 mg/ml
Purification	The antibody was affinity-purified from rabbit antiserum by affinity-chromatography using epitope-specific immunogen.
Dilution Ratios	IHC 1:100-1:300 ELISA 1:5000

Storage

Store at -20°C for one year. For short term storage and frequent use, store at 4°C for up to one month. Avoid repeated freeze-thaw cycles.

Background Information

APC1 (also known as Anaphase promoting complex subunit 1, Cyclosome subunit 1, Protein Tsg24, Mitotic checkpoint regulator and ANAPC1) is 1 of at least 11 subunits of the anaphase-promoting complex (APC), which functions at the metaphase-to-anaphase transition of the cell cycle and is regulated by spindle checkpoint proteins. The APC is an E3 ubiquitin ligase that targets cell cycle regulatory proteins for degradation by the proteasome, thereby allowing progression through the cell cycle.

Selected Validation Data

Product datasheet

Anti-APC1/ANAPC1 (Phospho-S355)

Antibody

Catalog Number: A03471S355

BOSTER

antibody and ELISA experts

BOSTER BIOLOGICAL TECHNOLOGY

Building C21, 3rd and 4th floors, Optics Valley Biomedical Accelerator,
Wuhan East Lake High-tech Development Zone

Web: www.boster.com **Phone:** 027-67845390 **Email:** boster@boster.com

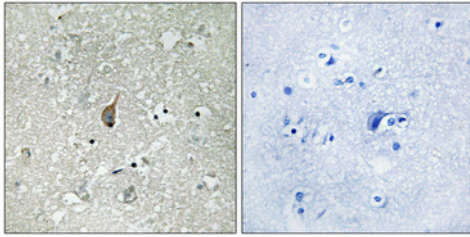


Figure 1. Immunohistochemistry validation of ANAPC1 using Anti-Phospho-APC1 (S355) ANAPC1 Antibody (A03471S355).

Immunohistochemical analysis of paraffin-embedded Human brain.
Antibody was diluted at 1:100 (4°C)