

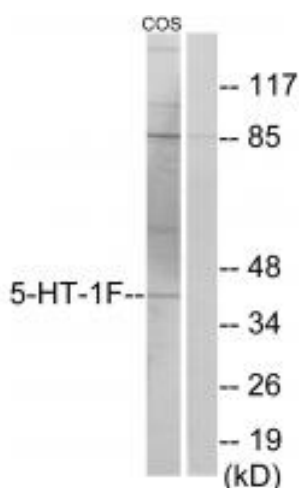
Basic Information

Product Name	Anti-5-HT-1F/HTR1F Antibody
Gene Name	HTR1F
Source	Rabbit
Clonality	Polyclonal
Isotype	IgG
Species Reactivity	human
Tested Application	WB
Contents	Rabbit IgG in phosphate buffered saline (without Mg ²⁺ and Ca ²⁺), pH 7.4, 150mM NaCl, 0.02% sodium azide and 50% glycerol.
Immunogen	Synthesized peptide derived from internal of human 5-HT-1F.
Concentration	0.5-1mg/ml, actual concentration vary by lot. Use suggested dilution ratio to decide dilution procedure.
Purification	Immunogen affinity purified
Dilution Ratios	WB, 1:500-1:3000

Storage

Store at -20°C for one year. For short term storage and frequent use, store at 4°C for up to one month. Avoid repeated freeze-thaw cycles.

Selected Validation Data



Western blot analysis of extracts from COS-7 cells, using 5-HT-1F antibody A10463.

Product datasheet

Anti-5-HT-1F/HTR1F Antibody

Catalog Number: **A10463**

BOSTER

antibody and ELISA experts

BOSTER BIOLOGICAL TECHNOLOGY

Building C21, 3rd and 4th floors, Optics Valley Biomedical Accelerator,
Wuhan East Lake High-tech Development Zone

Web: www.boster.com **Phone:** 027-67845390 **Email:** boster@boster.com