

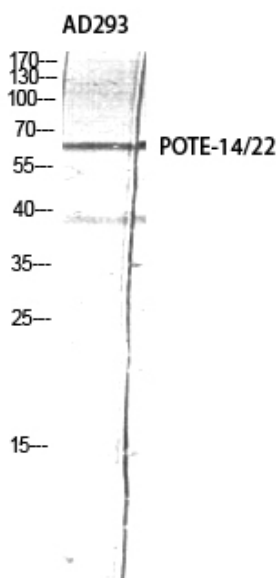
Basic Information

Product Name	Anti-A26C2/3 Antibody
Gene Name	POTEG/POTEH
Source	Rabbit
Clonality	Polyclonal
Isotype	IgG
Species Reactivity	human
Tested Application	WB
Contents	Liquid in PBS containing 50% glycerol, 0.5% BSA and 0.02% sodium azide.
Immunogen	Synthesized peptide derived from the Internal region of human POTE-14/22. at AA range: 150-230
Purification	Immunogen affinity purified
Dilution Ratios	WB, 1:500-1:2000

Storage

Store at -20°C for one year. For short term storage and frequent use, store at 4°C for up to one month. Avoid repeated freeze-thaw cycles.

Selected Validation Data



Western Blot (WB) analysis of AD293 using POTE-14/22 Polyclonal antibody.

Product datasheet

Anti-A26C2/3 Antibody

Catalog Number: **A18244**

BOSTER

antibody and ELISA experts

BOSTER BIOLOGICAL TECHNOLOGY

Building C21, 3rd and 4th floors, Optics Valley Biomedical Accelerator,
Wuhan East Lake High-tech Development Zone

Web: www.boster.com **Phone:** 027-67845390 **Email:** boster@boster.com