

Basic Information

Product Name	Anti-Alpha Tubulin/TUBA1B Antibody	
Gene Name	Tuba1b	
Source	Mouse	
Clonality	Monoclonal	
Isotype	IgG1	
Species Reactivity	human,mouse,rat,chicken	
Tested Application	WB, IHC	
Contents	200ug/ml antibody with PBS , 0.02% NaN ₃ , 1mg BSA and 50% glycerol.	
Immunogen	Microtubules from chicken embryo brain.	
Purification	Ascites	
Observed MW	55 kDa	
Dilution Ratios	Western blot (WB):	1:500-2000
	Immunohistochemistry (IHC):	1:50-400
	(Boiling the paraffin sections in 10mM citrate buffer,pH6.0,or PH8.0 EDTA repair liquid for 20 mins is required for the staining of formalin/paraffin sections.) Optimal working dilutions must be determined by end user.	

Storage

12 months from date of receipt, -20°C as supplied. 6 months 2 to 8°C after reconstitution. Avoid repeated freezing and thawing.

Background Information

Alpha-tubulin(α -1) mRNA is expressed only in brain with a molecular weight of about 55,000. The 3-prime UTR of α -1 is more than 80% homologous to the UTR of the rat brain alpha-tubulin gene, IL- α -T1. α -1 encodes a predicted 451-amino acid protein that is 100% identical to the rat homolog and differs by only 2 and 3 amino acids from the pig and chicken homologs, respectively.

Reference

Anti-Alpha Tubulin/TUBA1B Antibody被引用在55文献中。

Selected Validation Data

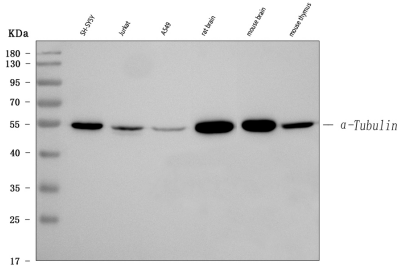


Figure 1. Western blot analysis of anti- alpha Tubulin antibody (BM1452). The sample well of each lane was loaded with 50ug of sample under reducing conditions.

Lane 1: SH-SY5Y whole cell lysates,

Lane 2: Jurkat whole cell lysates,

Lane 3: A549 whole cell lysates,

Lane 4: rat brain tissue lysates,

Lane 5: mouse brain tissue lysates,

Lane 6: mouse thymus tissue lysates.

Use mouse anti- alpha Tubulin 1:1000, probed with a goat anti-mouse IgG-HRP secondary antibody. The signal is developed using an Enhanced Chemiluminescent detection (ECL) kit (Catalog # EK1001). A specific band was detected for alpha Tubulin at approximately 55KD. The expected band size for alpha Tubulin is at 50KD.

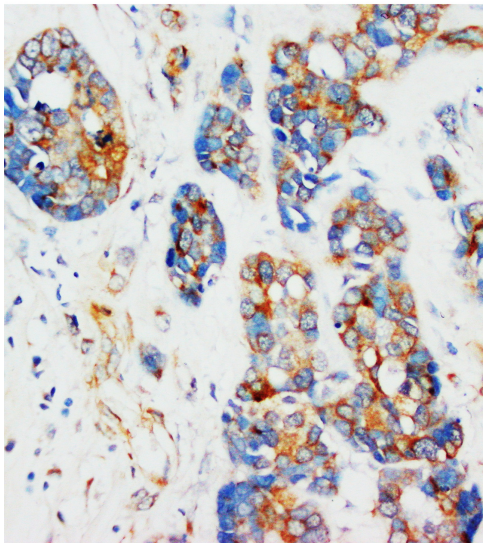


Figure 2. IHC analysis using anti- alpha Tubulin antibody (BM1452). detected in paraffin-embedded section of Human Mammary Cancer tissue. Biotinylated goat anti-mouse IgG was used as secondary antibody. The tissue section was developed using Streptavidin-Biotin-Complex (SABC) (Catalog # SA1022) with DAB as the chromogen.