

Basic Information

Product Name	Anti-Beta Tubulin/TUBB1 Antibody	
Gene Name	TUBB1	
Source	Rabbit	
Clonality	Monoclonal	
Isotype	IgG	
Species Reactivity	human, mouse, rat	
Tested Application	WB, IHC, ICC/IF, FCM	
Contents	500 ug/ml; Rabbit IgG in phosphate buffered saline, pH 7.4, 150mM NaCl, 0.02% sodium azide, 0.4-0.5 mg/ml BSA and 50% glycerol.	
Immunogen	A synthesized peptide derived from human beta I Tubulin	
Purification	Affinity-chromatography	
Observed MW	50 kDa	
Dilution Ratios	Western blot (WB):	1:1000-5000
	Immunohistochemistry (IHC):	1:50-200
	Immunocytochemistry/Immunofluorescence (ICC/IF):	1:50-200
	Flow Cytometry (FCM):	1:20

Storage

12 months from date of receipt, -20°C as supplied. 6 months 2 to 8°C after reconstitution. Avoid repeated freezing and thawing.

Background Information

TUBB1 is a gene that codes for the protein Tubulin beta-1 chain in humans. This gene encodes a member of the beta tubulin protein family. Beta tubulins are one of two core protein families (alpha and beta tubulins) that heterodimerize and assemble to form microtubules. This protein is specifically expressed in platelets and megakaryocytes and may be involved in proplatelet production and platelet release. A mutations in this gene is associated with autosomal dominant macrothrombocytopenia. Two pseudogenes of this gene are found on chromosome Y.

Reference

Anti-Beta Tubulin/TUBB1 Antibody被引用在4文献中。

Selected Validation Data

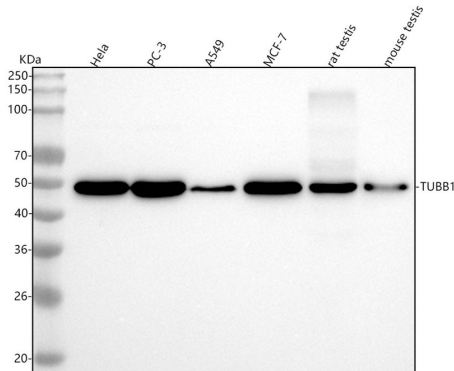


Figure 1. Western blot analysis of anti-Beta Tubulin/TUBB1 antibody (BM3878). The sample well of each lane was loaded with 30 ug of sample under reducing conditions.

Lane 1: human HeLa whole cell lysates,

Lane 2: human PC-3 whole cell lysates,

Lane 3: human A549 whole cell lysates,

Lane 4: human MCF-7 whole cell lysates,

Lane 5: rat testis tissue lysates,

Lane 6: mouse testis tissue lysates.

After electrophoresis, proteins were transferred to a membrane. Then the membrane was incubated with rabbit anti-Beta Tubulin/TUBB1 antigen affinity purified monoclonal antibody (BM3878) at a dilution of 1:1000 and probed with a goat anti-rabbit IgG-HRP secondary antibody (Catalog # BA1054). The signal is developed using ECL Plus Western Blotting Substrate (Catalog # AR1197). A specific band was detected for Beta Tubulin/TUBB1 at approximately 50 kDa. The expected band size for Beta Tubulin/TUBB1 is at 50 kDa.

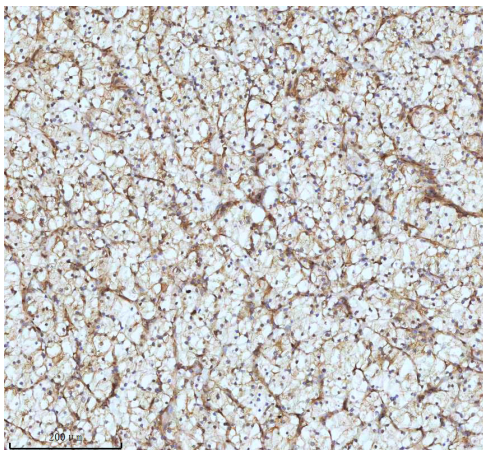


Figure 2. IHC analysis of Beta Tubulin/TUBB1 using anti-Beta Tubulin/TUBB1 antibody (BM3878) .

Beta Tubulin/TUBB1 was detected in a paraffin-embedded section of human clear cell renal cell carcinoma tissue. The tissue section was incubated with rabbit anti-Beta Tubulin/TUBB1 Antibody (BM3878) at a dilution of 1:200 and developed using HRP Conjugated Rabbit IgG Super Vision Assay Kit (Catalog # SV0002) with DAB (Catalog # AR1022) as the chromogen.