

Basic Information

Product Name	Anti-beta III Tubulin/TUBB3 Antibody	
Gene Name	TUBB3	
Source	Rabbit	
Clonality	Monoclonal	
Isotype	IgG	
Species Reactivity	human, mouse, rat	
Tested Application	WB, IHC, ICC/IF, IP, FCM	
Contents	500 ug/ml; Rabbit IgG in phosphate buffered saline, pH 7.4, 150mM NaCl, 0.02% sodium azide, 0.4-0.5 mg/ml BSA and 50% glycerol.	
Immunogen	A synthesized peptide derived from human beta III Tubulin	
Purification	Affinity-chromatography	
Observed MW	50 kDa	
Dilution Ratios	Western blot (WB):	1:1000-5000
	Immunohistochemistry (IHC):	1:50-200
	Immunocytochemistry/Immunofluorescence (ICC/IF):	1:50-200
	ImmunoPrecipitation (IP):	1:20
	Flow Cytometry (FCM):	1:20

Storage

12 months from date of receipt, -20°C as supplied. 6 months 2 to 8°C after reconstitution. Avoid repeated freezing and thawing.

Reference

Anti-beta III Tubulin/TUBB3 Antibody被引用在2文献中。

Selected Validation Data

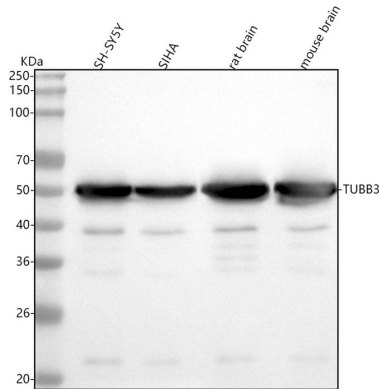


Figure 1. Western blot analysis of anti-beta III Tubulin/TUBB3 antibody (BM3881). The sample well of each lane was loaded with 30 ug of sample under reducing conditions.

Lane 1: human SH-SY5Y whole cell lysates,

Lane 2: human SiHa whole cell lysates,

Lane 3: rat brain tissue lysates,

Lane 4: mouse brain tissue lysates.

After electrophoresis, proteins were transferred to a membrane.

Then the membrane was incubated with rabbit anti-beta III Tubulin/TUBB3 antigen affinity purified monoclonal antibody (BM3881) at a dilution of 1:1000 and probed with a goat anti-rabbit IgG-HRP secondary antibody (Catalog # BA1054). The signal is developed using ECL Plus Western Blotting Substrate (Catalog # AR1197). A specific band was detected for beta III Tubulin/TUBB3 at approximately 50 kDa. The expected band size for beta III Tubulin/TUBB3 is at 50 kDa.

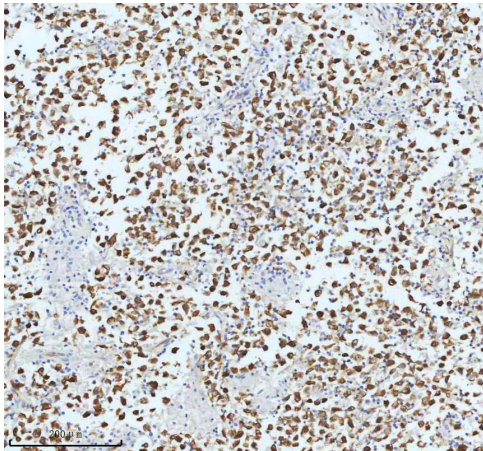


Figure 2. IHC analysis of beta III Tubulin/TUBB3 using anti-beta III Tubulin/TUBB3 antibody (BM3881) .

beta III Tubulin/TUBB3 was detected in a paraffin-embedded section of human testicular seminoma tissue. The tissue section was incubated with rabbit anti-beta III Tubulin/TUBB3 Antibody (BM3881) at a dilution of 1:200 and developed using HRP Conjugated Rabbit IgG Super Vision Assay Kit (Catalog # SV0002) with DAB (Catalog # AR1022) as the chromogen.