

Basic Information

Product Name	Anti-beta III Tubulin/TUBB3 Antibody
Gene Name	TUBB3
Source	Rabbit
Clonality	Monoclonal
Isotype	IgG
Species Reactivity	human, mouse, rat
Tested Application	WB
Contents	500 ug/ml; Rabbit IgG in phosphate buffered saline, pH 7.4, 150mM NaCl, 0.02% sodium azide, 0.4-0.5 mg/ml BSA and 50% glycerol.
Immunogen	A synthesized peptide derived from human beta Tubulin
Purification	Affinity-chromatography
Observed MW	50 kDa
Dilution Ratios	Western blot (WB):1:1000-5000

Storage

12 months from date of receipt, -20°C as supplied. 6 months 2 to 8°C after reconstitution. Avoid repeated freezing and thawing.

Reference

Anti-beta III Tubulin/TUBB3 Antibody被引用在2文献中。

Selected Validation Data

Product datasheet

Anti-beta III Tubulin/TUBB3 Antibody

Catalog Number: **BM3897**

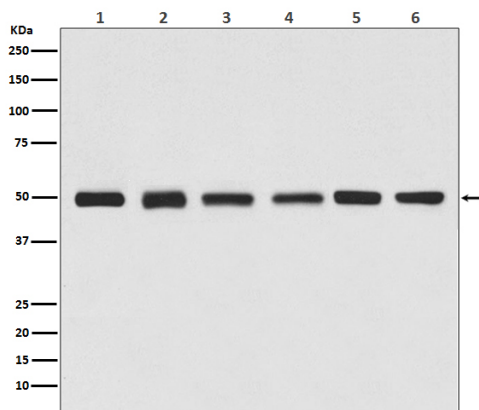
BOSTER

antibody and ELISA experts

BOSTER BIOLOGICAL TECHNOLOGY

Building C21, 3rd and 4th floors, Optics Valley Biomedical Accelerator,
Wuhan East Lake High-tech Development Zone

Web: www.boster.com **Phone:** 027-67845390 **Email:** boster@boster.com



Western blot analysis of beta Tubulin expression in (1) Jurkat cell lysate, (2) Human kidney lysate, (3) 3T3 cell lysate, (4) Mouse brain lysate, (5) C6 cell lysate, (6) Rat heart lysate.