

Basic Information

Product Name	Anti-BCL2A1 Antibody
Gene Name	BCL2A1
Source	Rabbit
Clonality	Monoclonal
Isotype	IgG
Species Reactivity	human, mouse, rat
Tested Application	WB, IHC, FCM
Contents	500 ug/ml; Rabbit IgG in phosphate buffered saline, pH 7.4, 150mM NaCl, 0.02% sodium azide, 0.4-0.5 mg/ml BSA and 50% glycerol.
Immunogen	A synthesized peptide derived from human BCL2A1
Concentration	500 ug/ml
Purification	Affinity-chromatography
Observed MW	27 kDa
Dilution Ratios	Western blot (WB): 1:500-2000 Immunohistochemistry (IHC): 1:50-200 Flow Cytometry (FCM): 1:20

Storage

12 months from date of receipt, -20°C as supplied. 6 months 2 to 8°C after reconstitution. Avoid repeated freezing and thawing.

Selected Validation Data

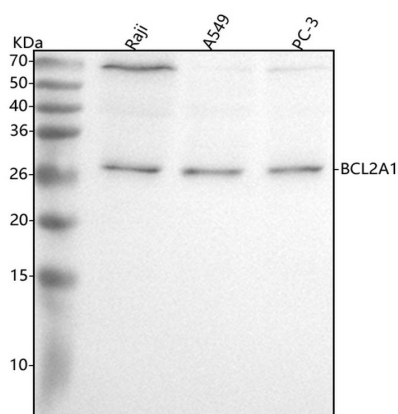


Figure 1. Western blot analysis of anti-BCL2A1 antibody (BM4421).

The sample well of each lane was loaded with 30 ug of sample under reducing conditions.

Lane 1: human Raji whole cell lysates,

Lane 2: human A549 whole cell lysates,

Lane 3: human PC-3 whole cell lysates.

After electrophoresis, proteins were transferred to a membrane.

Then the membrane was incubated with rabbit anti-BCL2A1 antigen

affinity purified monoclonal antibody (BM4421) at a dilution of

1:1000 and probed with a goat anti-rabbit IgG-HRP secondary

antibody (Catalog # BA1054). The signal is developed using ECL

Product datasheet

Anti-BCL2A1 Antibody

Catalog Number: **BM4421**



antibody and ELISA experts

BOSTER BIOLOGICAL TECHNOLOGY

Building C21, 3rd and 4th floors, Optics Valley Biomedical Accelerator,
Wuhan East Lake High-tech Development Zone

Web: www.boster.com **Phone:** 027-67845390 **Email:** boster@boster.com

Plus Western Blotting Substrate (Catalog # AR1197). A specific band was detected for BCL2A1 at approximately 27 kDa. The expected band size for BCL2A1 is at 20 kDa.