

Basic Information

Product Name	Anti-14-3-3 Sigma/SFN Antibody
Gene Name	SFN
Source	Rabbit
Clonality	Monoclonal
Isotype	IgG
Species Reactivity	human, rat
Tested Application	WB, IHC
Contents	500 ug/ml; Rabbit IgG in phosphate buffered saline, pH 7.4, 150mM NaCl, 0.02% sodium azide, 0.4-0.5 mg/ml BSA and 50% glycerol.
Immunogen	A synthesized peptide derived from human 14-3-3 sigma
Concentration	500 ug/ml
Purification	Affinity-chromatography
Observed MW	28 kDa
Dilution Ratios	Western blot (WB): 1:500-2000 Immunohistochemistry (IHC):1:50-200

Storage

12 months from date of receipt, -20°C as supplied. 6 months 2 to 8°C after reconstitution. Avoid repeated freezing and thawing.

Background Information

Stratifin(SFN), also known as 14-3-3 protein sigma, is strongly induced by gamma irradiation and other DNA-damaging agents. The induction of 14-3-3-sigma is mediated by a p53 -responsive element located 1.8 kb upstream of its transcription start site. Leffers et al.(1993)obtained peptide sequence and subsequently cloned a T-cell cDNA of the 14-3-3 family of conserved proteins. The protein, called stratifin, was shown to be diffusely distributed in the cytoplasm and was present in cultured epithelial cells. It was most abundant in tissues enriched in stratified keratinizing epithelium.

Selected Validation Data

Product datasheet

Anti-14-3-3 Sigma/SFN Antibody

Catalog Number: BM4692

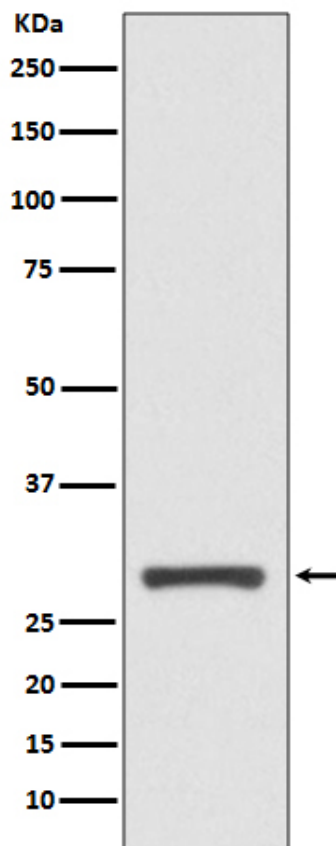
BOSTER

antibody and ELISA experts

BOSTER BIOLOGICAL TECHNOLOGY

Building C21, 3rd and 4th floors, Optics Valley Biomedical Accelerator,
Wuhan East Lake High-tech Development Zone

Web: www.boster.com **Phone:** 027-67845390 **Email:** boster@boster.com



Western blot analysis of 14-3-3 sigma expression in A431 cell lysate.