

## Basic Information

<b>Product Name</b>	Anti-Myc Tag Antibody (Clone#10D11)
<b>Source</b>	Mouse
<b>Clonality</b>	Monoclonal
<b>Isotype</b>	IgG1
<b>Species Reactivity</b>	All species
<b>Tested Application</b>	Dot blot, ELISA, WB
<b>Contents</b>	500ug/ml antibody with PBS , 0.02% NaN <sub>3</sub> , 1mg BSA and 50% glycerol.
<b>Immunogen</b>	This antibody is produced by immunizing animals with a synthetic Myc tag peptide corresponding to KLH.
<b>Concentration</b>	0.5mg/ml
<b>Observed MW</b>	47 kDa
<b>Dilution Ratios</b>	Western blot (WB):1:500-5000

## Storage

12 months from date of receipt, -20°C as supplied. 6 months 2 to 8°C after reconstitution. Avoid repeated freezing and thawing.

## Background Information

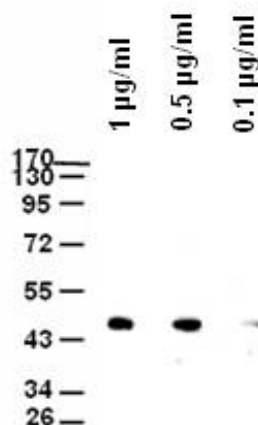
A Myc tag is a polypeptide protein tag derived from the c-myc gene product that can be added to a protein using recombinant DNA technology. The myc tag antibody can be used in detecting the recombinant protein with a myc tag for many purposes, for example cellular localization studies by immunofluorescence or detection by Western blotting.

## Reference

Anti-Myc Tag Antibody (Clone#10D11)被引用在1文献中。

## Selected Validation Data

**Anti-Myc Monoclonal Antibody**



Western blot analysis of different concentration of Anti-Myc Tag(10D11) Monoclonal Antibody (M00026-2)

**Blocking:** Incubate the membrane with 5% Non-Fat Milk, 1PBS, 4 overnight

**Antibody Incubation:** Diluted antibody in 5% Non-Fat Milk, 1TBS, 0.1% Tween-20, RT, 30mins