

Basic Information

Product Name	Anti-Flag Tag Antibody (Clone#1E6)
Source	Mouse
Clonality	Monoclonal
Isotype	IgG2b
Species Reactivity	All species
Tested Application	Dot blot, ELISA, WB
Contents	500ug/ml antibody with PBS , 0.02% NaN3 , 1mg BSA and 50% glycerol.
Immunogen	This antibody is produced by immunizing animals with a synthetic Flag tag (DYKDDDDK) peptide corresponding to KLH.
Concentration	0.5mg/ml
Observed MW	45 kDa
Dilution Ratios	Western blot (WB):1:500-5000

Storage

12 months from date of receipt, -20°C as supplied. 6 months 2 to 8°C after reconstitution. Avoid repeated freezing and thawing.

Background Information

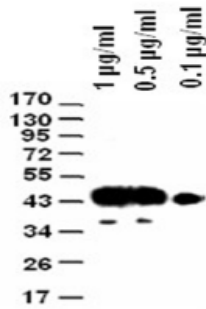
FLAG-Tag, or FLAG octapeptide, or FLAG epitope, is a polypeptide protein tag that can be added to a protein using recombinant DNA technology, having the sequence motif DYKDDDDK. It represents an early example of a nanotechnology device, in that it can be attached to a protein like a molecular handle, then used to manipulate the protein, and subsequently detached. It has been used for studying proteins in living cells and for protein purification by affinity chromatography.

Reference

Anti-Flag Tag Antibody (Clone#1E6)被引用在10文献中。

Selected Validation Data

Anti-Flag Monoclonal Antibody



Western blot analysis of different concentration of Anti-Flag Tag(1E6) Monoclonal Antibody (M30971)

Blocking: Incubate the membrane with 5% Non-Fat Milk, PBS, 4 ℓ overnight

Antibody Incubation: Diluted antibody in 5% Non-Fat Milk, TBS, 0.1% Tween-20, RT, 30mins