

Basic Information

Product Name	Anti-GFP Tag Antibody (Clone#8C1)
Source	Mouse
Clonality	Monoclonal
Isotype	IgG1
Species Reactivity	All species
Tested Application	Dot blot, ELISA, WB
Contents	0.5mg/ml in PBS, pH7.4, containing 0.02% Sodium Azide and 50% glycerol.
Immunogen	This antibody is produced by immunizing animals with a synthetic GFP tag peptide corresponding to KLH.
Concentration	0.5mg/ml
Dilution Ratios	Western blot (WB):1:500-5000

Storage

12 months from date of receipt, -20°C as supplied. 6 months 2 to 8°C after reconstitution. Avoid repeated freezing and thawing.

Background Information

Green fluorescent protein is a 27 Kd protein, derived from the bioluminescent jellyfish *Aequorea Victoria*. When expressed in either eukaryotic or prokaryotic cells and illuminated by blue or UV light, GFP yields a bright green fluorescence. Fluorescent proteins and its mutated allelic forms, blue, cyan and yellow have become a useful and ubiquitous tool where they function as a fluorescent protein tag. Many recombinant proteins have been engineered with GFP tags to facilitate the detection, isolation and purification of the proteins.

Selected Validation Data

Product datasheet

Anti-GFP Tag Antibody (Clone#8C1)

Catalog Number: **M30972**

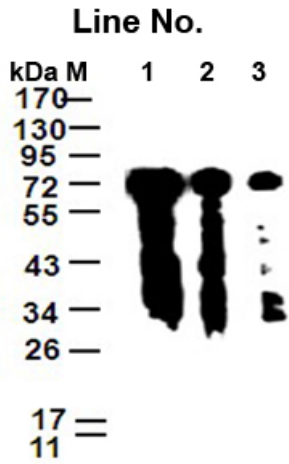
BOSTER

antibody and ELISA experts

BOSTER BIOLOGICAL TECHNOLOGY

Building C21, 3rd and 4th floors, Optics Valley Biomedical Accelerator,
Wuhan East Lake High-tech Development Zone

Web: www.boster.com **Phone:** 027-67845390 **Email:** boster@boster.com



Western blot analysis of different concentration of Anti-GFP (8C1)

Monoclonal Antibody

Antigen: Extracts from E.coli expressing GFP-tagged protein

Line No.

1: 1 ug/mL

2: 0.5 ug/mL

3: 0.1 ug/mL