

## Basic Information

|                           |  |
|---------------------------|--|
| <b>Product Name</b>       | Anti-GST Tag Antibody (Clone#5A7)  |
| <b>Source</b>             | Mouse  |
| <b>Clonality</b>          | Monoclonal   |
| <b>Isotype</b>            | IgG2b  |
| <b>Species Reactivity</b> | All species  |
| <b>Tested Application</b> | Dot blot, ELISA, WB  |
| <b>Contents</b>           | 500ug/ml antibody with PBS , 0.02% NaN <sub>3</sub> , 1mg BSA and 50% glycerol.                        |
| <b>Immunogen</b>          | This antibody is produced by immunizing animals with a synthetic GST tag peptide corresponding to KLH. |
| <b>Concentration</b>      | 0.5mg/ml   |
| <b>Observed MW</b>        | 52 kDa   |
| <b>Dilution Ratios</b>    | Western blot (WB):1:500-5000   |

## Storage

12 months from date of receipt, -20°C as supplied. 6 months 2 to 8°C after reconstitution. Avoid repeated freezing and thawing.

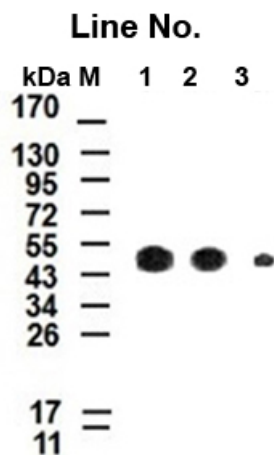
## Background Information

A GST-Tag is often used to separate and purify proteins that contain the GST-fusion protein. The Tag is 220 amino acids (roughly 26KDa), in size is quite large. It is fused to the N-terminus of a protein. However, many commercially available sources of GST-Tagged plasmids include a thrombin domain for cleavage of the GST Tag during protein purification.

## Reference

Anti-GST Tag Antibody (Clone#5A7)被引用在1文献中。

## Selected Validation Data



Western blot analysis of different concentration of Anti-GST Tag  
(5A7) Monoclonal Antibody

Antigen: Extracts from E.coli expressing GST-tagged protein

Line No.

1: 1 ug/mL

2: 0.5 ug/mL

3: 0.1 ug/mL