

Basic Information

Product Name	Anti-HA Tag Antibody (Clone#1A4)
Source	Mouse
Clonality	Monoclonal
Isotype	IgG1
Species Reactivity	All species
Tested Application	WB, Dot blot, ELISA
Contents	500ug/ml antibody with PBS, 0.02% NaN ₃ , 1mg BSA and 50% glycerol.
Immunogen	This antibody is produced by immunizing animals with a synthetic HA tag peptide corresponding to KLH.
Concentration	0.5mg/ml
Observed MW	52 kDa
Dilution Ratios	Western blot (WB):1:500-5000 Dot: 1:500-5000 ELISA: 1:500-5000

Storage

12 months from date of receipt, -20°C as supplied. 6 months 2 to 8°C after reconstitution. Avoid repeated freezing and thawing.

Background Information

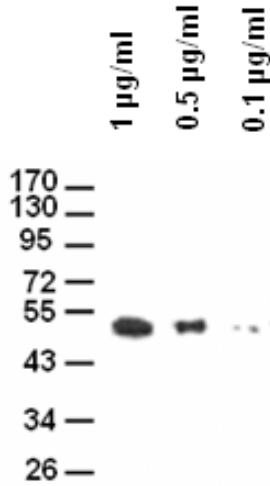
The HA Tag is derived from the human influenza hemagglutinin corresponding to amino acids 98-106. It has been extensively used as a general epitope Tag in expression vectors. This Tag facilitates the detection, isolation, and purification of the proteins.

Reference

Anti-HA Tag Antibody (Clone#1A4)被引用在2文献中。

Selected Validation Data

Anti-HA Monoclonal Antibody



Western blot analysis of different concentration of Anti-HA Tag(1A4) Monoclonal Antibody (M30974)

Blocking: Incubate the membrane with 5% Non-Fat Milk, 1PBS, 4°C, overnight

Antibody Incubation: Diluted antibody in 5% Non-Fat Milk, 1TBS, 0.1% Tween-20, RT, 30mins