

Basic Information

Product Name	Anti-His Tag Antibody
Source	Mouse
Clonality	Monoclonal
Isotype	IgG2b
Species Reactivity	All species
Tested Application	WB
Contents	1 mg/ml antibody with PBS , 0.02% NaN ₃ , 1mg BSA and 50% glycerol.
Immunogen	This antibody is produced by immunizing animals with a synthetic His tag peptide corresponding to KLH.
Concentration	500ug/ml
Purification	protein G purified.
Dilution Ratios	Western blot (WB):1:500-2000

Storage

12 months from date of receipt, -20°C as supplied. 6 months 2 to 8°C after reconstitution. Avoid repeated freezing and thawing.

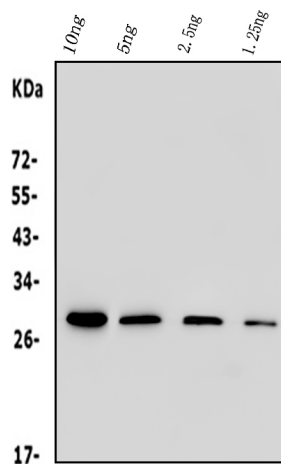
Background Information

A Polyhistidine-Tag is an amino acids motif in proteins that consists of at least six histidine(His) residues, often at the N- or C-terminus of the protein. It is also known as hexa histidine-Tag, 6xHis-Tag, His6 Tag and by the trademarked name His-Tag. Polyhistidine-Tags are often used for affinity purification of genetically modified proteins.

Reference

Anti-His Tag Antibody被引用在21文献中。

Selected Validation Data



Western blot analysis of different concentration of Anti- His Tag (19b10) Monoclonal Antibody (M30975-1)Blocking: Incubate the membrane with 5% Non-Fat Milk, 1×PBS, 4°C, overnightAntibody Incubation: Diluted antibody in 5% Non-Fat Milk, 1×TBS, 0.1% Tween-20, RT, 30mins.