

Basic Information

Product Name	Anti-His Tag Antibody (Clone#9C11)
Source	Mouse
Clonality	Monoclonal
Isotype	IgG1
Species Reactivity	All species
Tested Application	Dot blot, ELISA, WB
Contents	500ug/ml antibody with PBS , 0.02% NaN ₃ , 1mg BSA and 50% glycerol.
Immunogen	This antibody is produced by immunizing animals with a synthetic His tag peptide corresponding to KLH.
Concentration	0.5mg/ml
Dilution Ratios	Western blot (WB):1:500-5000

Storage

12 months from date of receipt, -20°C as supplied. 6 months 2 to 8°C after reconstitution. Avoid repeated freezing and thawing.

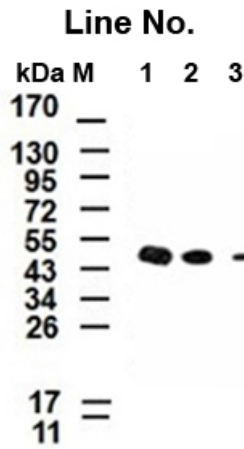
Background Information

A Polyhistidine-Tag is an amino acids motif in proteins that consists of at least six histidine (His) residues, often at the N- or C-terminus of the protein. It is also known as hexa histidine-Tag, 6xHis-Tag, His6 Tag and by the trademarked name His-Tag. Polyhistidine-Tags are often used for affinity purification of genetically modified proteins.

Reference

Anti-His Tag Antibody (Clone#9C11)被引用在27文献中。

Selected Validation Data



Western blot analysis of different concentration of Anti-His tag
(9C11) Monoclonal Antibody

Antigen: Extracts from E.coli expressing His-tagged protein

Line No.

1: 1 ug/mL

2: 0.5 ug/mL

3: 0.1 ug/mL