

Basic Information

Product Name	Anti-ATP1A1 Antibody
Gene Name	ATP1A1
Source	Rabbit
Clonality	Polyclonal
Isotype	IgG
Species Reactivity	human,mouse,rat,monkey
Tested Application	WB
Contents	500 ug/ml antibody with PBS, 0.02% NaN ₃ , 1 mg/ml BSA and 50% glycerol.
Immunogen	A synthetic peptide corresponding to a sequence at the N-terminus of human ATP1A1 different from the related mouse sequence by three amino acids, and from the related rat sequence by four amino acids.
Purification	Immunogen affinity purified.
Observed MW	100-113 kDa
Dilution Ratios	Western blot (WB):1:500-2000

Storage

12 months from date of receipt, -20°C as supplied. 6 months 2 to 8°C after reconstitution. Avoid repeated freezing and thawing.

Background Information

The protein encoded by this gene belongs to the family of P-type cation transport ATPases, and to the subfamily of Na⁺/K⁺-ATPases. Na⁺/K⁺-ATPase is an integral membrane protein responsible for establishing and maintaining the electrochemical gradients of Na and K ions across the plasma membrane. These gradients are essential for osmoregulation, for sodium-coupled transport of a variety of organic and inorganic molecules, and for electrical excitability of nerve and muscle. This enzyme is composed of two subunits, a large catalytic subunit (alpha) and a smaller glycoprotein subunit (beta). The catalytic subunit of Na⁺/K⁺-ATPase is encoded by multiple genes. This gene encodes an alpha 1 subunit. Multiple transcript variants encoding different isoforms have been found for this gene.

Reference

Anti-ATP1A1 Antibody被引用在4文献中。

Selected Validation Data

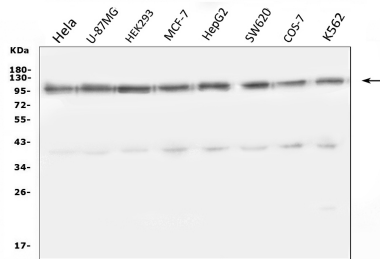


Figure 1. Western blot analysis of anti- ATP1A1 antibody (PB0504).The sample well of each lane was loaded with 50ug of sample under reducing conditions.Lane 1: human HELA whole cell lysates,Lane 2: human U87-MG whole cell lysates,Lane 3: human HEK293 whole cell lysates,Lane 4: human MCF-7 whole cell lysates,Lane 5: human HEPG2 whole cell lysates,Lane 6: human SW620 whole cell lysates,Lane 7: monkey COS-7 whole cell lysates,Lane 8: human K562 whole cell lysates.Use rabbit anti-ATP1A1 1:1000, probed with a goat anti-rabbit IgG-HRP secondary antibody. The signal is developed using an Enhanced Chemiluminescent detection (ECL) kit (Catalog # EK1002). A specific band was detected for ATP1A1 at approximately 100-113KD. The expected band size for ATP1A1 at 113KD.