

Basic Information

Product Name	Anti-SDF-1/CXCL12 Antibody	
Gene Name	CXCL12	
Source	Rabbit	
Clonality	Polyclonal	
Isotype	IgG	
Species Reactivity	human, mouse, rat	
Tested Application	IHC, IF, ELISA	
Contents	500 ug/ml antibody with PBS, 0.02% NaN ₃ , 1 mg/ml BSA and 50% glycerol.	
Immunogen	E. coli-derived human CXCL12 recombinant protein (Position: V24-M93). Human CXCL12 shares 98.5% and 97% amino acid (aa) sequence identity with mouse and rat CXCL12, respectively.	
Concentration	500 ug/ml	
Purification	Immunogen affinity purified.	
Dilution Ratios	Immunohistochemistry (IHC): 1:50-400 Immunofluorescence (IF): 1:50-400 Enzyme linked immunosorbent assay (ELISA): 1:100-1000 (Boiling the paraffin sections in 10mM citrate buffer, pH6.0, or PH8.0 EDTA repair liquid for 20 mins is required for the staining of formalin/paraffin sections.) Optimal working dilutions must be determined by end user.	

Storage

12 months from date of receipt, -20°C as supplied.

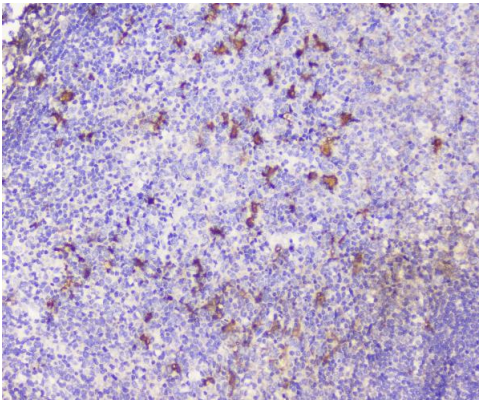
Background Information

The stromal cell-derived factor 1 (SDF1), also known as C-X-C motif chemokine 12 (CXCL12), is a chemokine protein that in humans is encoded by the CXCL12 gene on chromosome 10. This antimicrobial gene encodes a stromal cell-derived alpha chemokine member of the intercrine family. The encoded protein functions as the ligand for the G-protein coupled receptor, chemokine (C-X-C motif) receptor 4, and plays a role in many diverse cellular functions, including embryogenesis, immune surveillance, inflammation response, tissue homeostasis, and tumor growth and metastasis. Mutations in this gene are associated with resistance to human immunodeficiency virus type 1 infections. Multiple transcript variants encoding different isoforms have been found for this gene.

Reference

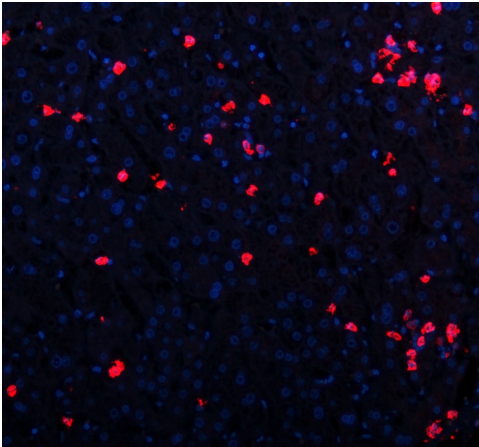
Anti-SDF-1/CXCL12 Antibody 被引用在21文献中。

Selected Validation Data



IHC analysis of CXCL12 using anti-CXCL12 antibody (A00053-2).

CXCL12 was detected in a paraffin-embedded section of human tonsil tissue. The tissue section was developed using HRP Conjugated Rabbit IgG Super Vision Assay Kit (Catalog # SV0002) with DAB (Catalog # AR1027) as the chromogen.



IF analysis of SDF-1/CXCL12 using anti-SDF-1/CXCL12 antibody (A00053-2).

SDF-1/CXCL12 was detected in a paraffin-embedded section of human hepatitis tissue. The tissue section was incubated with rabbit anti-SDF-1/CXCL12 Antibody (A00053-2) at a dilution of 1:100. Cy3-conjugated Anti-rabbit IgG Secondary Antibody (red)(Catalog#BA1032) was used as secondary antibody. The section was counterstained with DAPI (Catalog # AR1176) (Blue).