

## Basic Information

Product Name	Anti-CCR5 Antibody
Gene Name	CCR5
Source	Rabbit
Clonality	Polyclonal
Isotype	IgG
Species Reactivity	human, mouse, rat
Tested Application	WB, ELISA
Contents	500 ug/ml antibody with PBS, 0.02% NaN <sub>3</sub> , 1 mg/ml BSA and 50% glycerol.
Immunogen	E.coli-derived human CCR5 recombinant protein (Position: Q21-K322).
Concentration	500 ug/ml
Purification	Immunogen affinity purified.
Observed MW	40 kDa
Dilution Ratios	Western blot (WB):1:500-2000 ELISA: 1:100-1000

## Storage

12 months from date of receipt, -20°C as supplied.

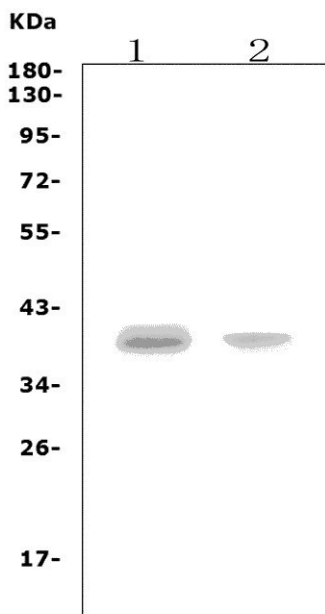
## Background Information

C-C chemokine receptor type 5, also known as CCR5 or CD195, is a protein on the surface of white blood cells that is involved in the immune system as it acts as a receptor for chemokines. It is mapped to 3p21.31. This gene encodes a member of the beta chemokine receptor family, which is predicted to be a seven transmembrane protein similar to G protein-coupled receptors. This protein is expressed by T cells and macrophages, and is known to be an important co-receptor for macrophage-tropic virus, including HIV, to enter host cells. Defective alleles of this gene have been associated with the HIV infection resistance. The ligands of this receptor include monocyte chemoattractant protein 2 (MCP-2), macrophage inflammatory protein 1 alpha (MIP-1 alpha), macrophage inflammatory protein 1 beta (MIP-1 beta) and regulated on activation normal T expressed and secreted protein (RANTES). Expression of this gene was also detected in a promyeloblastic cell line, suggesting that this protein may play a role in granulocyte lineage proliferation and differentiation. This gene is located at the chemokine receptor gene cluster region. An allelic polymorphism in this gene results in both functional and non-functional alleles; the reference genome represents the functional allele. Two transcript variants encoding the same protein have been found for this gene.

## Reference

Anti-CCR5 Antibody 被引用在3文献中。

## Selected Validation Data



Western blot analysis of CCR5 using anti-CCR5 antibody (A00061-2). The sample well of each lane was loaded with 30 ug of sample under reducing conditions.

Lane 1: rat spleen tissue lysates,

Lane 2: mouse spleen tissue lysates.

After electrophoresis, proteins were transferred to a membrane. Then the membrane was incubated with rabbit anti-CCR5 antigen affinity purified polyclonal antibody (A00061-2) at a dilution of 1:1000 and probed with a goat anti-rabbit IgG-HRP secondary antibody (Catalog # BA1054). The signal is developed using ECL Plus Western Blotting Substrate (Catalog # AR1197). A specific band was detected for CCR5 at approximately 40 kDa. The expected band size for CCR5 is at 41 kDa.