

Basic Information

Product Name	Anti-IL-1 beta/IL1B Antibody
Gene Name	IL1B
Source	Rabbit
Clonality	Polyclonal
Isotype	IgG
Species Reactivity	human, mouse, rat
Tested Application	WB
Contents	500 ug/ml antibody with PBS, 0.02% NaN ₃ , 1 mg/ml BSA and 50% glycerol.
Immunogen	E. coli-derived human IL-1 beta recombinant protein (Position: A117-S269). Human IL-1 beta shares 78.3% and 77.6% amino acid (aa) sequence identity with mouse and rat IL-1 beta, respectively.
Concentration	500 ug/ml
Purification	Immunogen affinity purified.
Observed MW	31-35 kDa
Dilution Ratios	Western blot (WB):1:500-2000

Storage

12 months from date of receipt, -20°C as supplied. 6 months 2 to 8°C after reconstitution. Avoid repeated freezing and thawing.

Background Information

Interleukin-1 β (IL-1 β) is a potent stimulator of bone resorption whose gene is mapped to 2q14, and has been implicated in the pathogenesis of high bone turnover and osteoporosis. IL-1 β , a prominent microglia-derived cytokine, caused oligodendrocyte death in coculture with astrocytes and microglia, but not in pure culture of oligodendrocytes alone. It also can cause nuclear export of a specific NCOR corepressor complex, resulting in derepression of a specific subset of nuclear factor-kappa-B (NF κ B)-regulated genes. Furthermore, Microenvironmental IL-1 β and, to a lesser extent, IL-1 α are required for in vivo angiogenesis and invasiveness of different tumor cells. Additional, the cooperation of IL-1 β and PDGFB induces contractile-to-synthetic phenotype modulation of human aortic smooth muscle cells in culture. Moreover, the association with disease may be explained by the biologic properties of IL-1 β , which is an important proinflammatory cytokine and a powerful inhibitor of gastric acid secretion.

Reference

Anti-IL-1 beta/IL1B Antibody被引用在45文献中。

Selected Validation Data

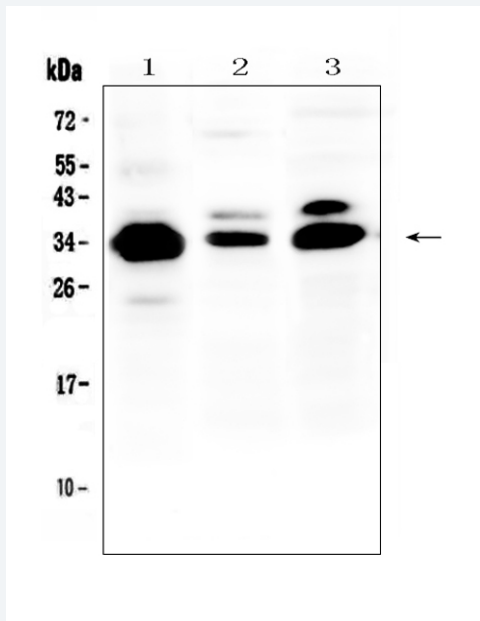


Figure 1. Western blot analysis of IL-1 beta/IL1B using anti-IL-1 beta/IL1B antibody (A00101). The sample well of each lane was loaded with 30 ug of sample under reducing conditions. Lane 1: human COLO-320 whole cell lysates, Lane 2: rat spleen tissue lysates, Lane 3: mouse NIH/3T3 whole cell lysates. After electrophoresis, proteins were transferred to a membrane. Then the membrane was incubated with rabbit anti-IL-1 beta/IL1B antigen affinity purified polyclonal antibody (A00101) at a dilution of 1:1000 and probed with a goat anti-rabbit IgG-HRP secondary antibody (Catalog # BA1054). The signal is developed using ECL Plus Western Blotting Substrate (Catalog # AR1197). A specific band was detected for IL-1 beta/IL1B at approximately 31-35 kDa. The expected band size for IL-1 beta/IL1B is at 31 kDa.