

Basic Information

Product Name	Anti-IL6 Antibody
Gene Name	IL6
Source	Rabbit
Clonality	Polyclonal
Isotype	IgG
Species Reactivity	mouse, rat
Tested Application	WB, ELISA(Cap)
Contents	500 ug/ml antibody with PBS, 0.02% NaN ₃ , 1 mg/ml BSA and 50% glycerol.
Immunogen	A synthetic peptide corresponding to a sequence at the C-terminus of rat IL6, which shares 87.5% amino acid (aa) sequence identity with mouse IL6.
Concentration	500 ug/ml
Purification	Immunogen affinity purified.
Observed MW	30 kDa
Dilution Ratios	Western blot (WB):1:500-2000 ELISA(Cap): 1:50-1:200

Storage

12 months from date of receipt, -20°C as supplied. 6 months 2 to 8°C after reconstitution. Avoid repeated freezing and thawing.

Background Information

Interleukin-6 (IL-6) is a protein that in humans is encoded by the IL6 gene. IL-6 is an interleukin that acts as both a pro-inflammatory and anti-inflammatory cytokine. It is secreted by T cells and macrophages to stimulate immune response to trauma, especially burns or other tissue damage leading to inflammation. IL-6 is one of the most important mediators of fever and of the acute phase response. IL-6 is also essential for hybridoma growth and is found in many supplemental cloning media such as briclone. By in situ hybridization and Southern blot analysis of mouse-human hybrid cell lines, the IL6 gene is mapped to chromosome 7p15.

Reference

Anti-IL6 Antibody被引用在8文献中。

Selected Validation Data

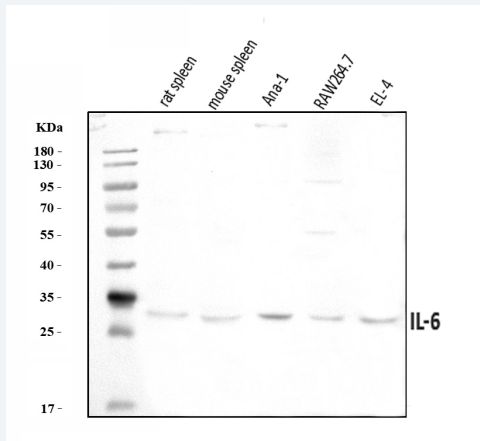


Figure 1. Western blot analysis of IL6 using anti-IL6 antibody (A00102-2). The sample well of each lane was loaded with 30 ug of sample under reducing conditions.

Lane 1: rat spleen tissue lysates,

Lane 2: mouse spleen tissue lysates,

Lane 3: Ana-1 whole cell lysates,

Lane 4: RAW264.7 whole cell lysates,

Lane 5: EL-4 whole cell lysates.

After electrophoresis, proteins were transferred to a membrane. Then the membrane was incubated with rabbit anti-IL6 antigen affinity purified polyclonal antibody (A00102-2) at a dilution of 1:1000 and probed with a goat anti-rabbit IgG-HRP secondary antibody (Catalog # BA1054). The signal is developed using ECL Plus Western Blotting Substrate (Catalog # AR1197). A specific band was detected for IL6 at approximately 30 kDa. The expected band size for IL6 is at 24 kDa.