

## Basic Information

<b>Product Name</b>	Anti-ABL1 (Phospho-T735) Antibody
<b>Gene Name</b>	ABL1
<b>Source</b>	Rabbit
<b>Clonality</b>	Polyclonal
<b>Isotype</b>	IgG
<b>Species Reactivity</b>	human, mouse, rat, monkey
<b>Tested Application</b>	WB, IHC, ELISA
<b>Contents</b>	Liquid in PBS containing 50% glycerol, 0.5% BSA and 0.02% sodium azide.
<b>Immunogen</b>	Synthesized peptide derived from human Abl1 around the phosphorylation site of T735.
<b>Concentration</b>	1 mg/ml
<b>Purification</b>	The antibody was affinity-purified from rabbit antiserum by affinity-chromatography using epitope-specific immunogen.
<b>Dilution Ratios</b>	WB 1:500-1:2000 IHC 1:100-1:300 ELISA 1:5000

## Storage

Store at -20°C for one year. For short term storage and frequent use, store at 4°C for up to one month. Avoid repeated freeze-thaw cycles.

## Selected Validation Data

Product datasheet

## Anti-ABL1 (Phospho-T735) Antibody

Catalog Number: **A00133T735**

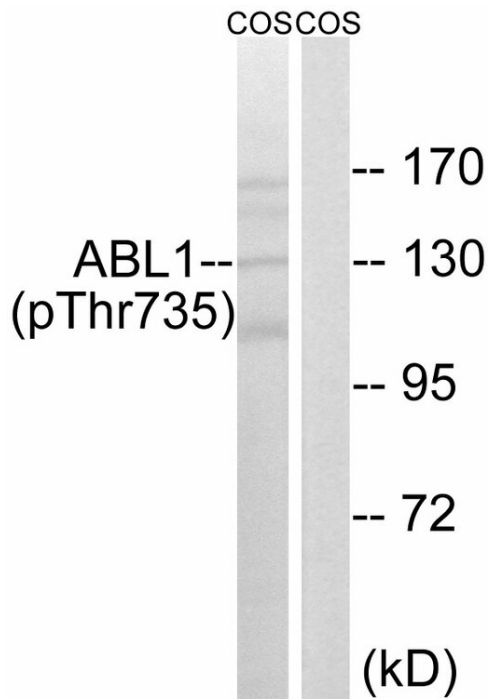
# BOSTER

antibody and ELISA experts

**BOSTER BIOLOGICAL TECHNOLOGY**

Building C21, 3rd and 4th floors, Optics Valley Biomedical Accelerator,  
Wuhan East Lake High-tech Development Zone

**Web:** [www.boster.com](http://www.boster.com) **Phone:** 027-67845390 **Email:** [boster@boster.com](mailto:boster@boster.com)



Western blot analysis of lysates from COS7 cells treated with EGF 200ng/ml 30', using ABL1 (Phospho-Thr735) Antibody. The lane on the right is blocked with the phospho peptide.