

Basic Information

Product Name	Anti-ABL1 (Phospho-Y245) Antibody
Gene Name	ABL1
Source	Rabbit
Clonality	Polyclonal
Isotype	IgG
Species Reactivity	human, mouse, rat
Tested Application	ELISA, IF, ICC, WB
Contents	Liquid in PBS containing 50% glycerol, 0.5% BSA and 0.02% sodium azide.
Immunogen	Synthesized peptide derived from human c-Abl around the phosphorylation site of Y245.
Concentration	1 mg/ml
Purification	The antibody was affinity-purified from rabbit antiserum by affinity-chromatography using epitope-specific immunogen.
Dilution Ratios	WB 1:500-1:2000 IF 1:200-1:1000 ELISA 1:5000

Storage

Store at -20°C for one year. For short term storage and frequent use, store at 4°C for up to one month. Avoid repeated freeze-thaw cycles.

Selected Validation Data

Product datasheet

Anti-ABL1 (Phospho-Y245) Antibody

Catalog Number: **A00133Y245**

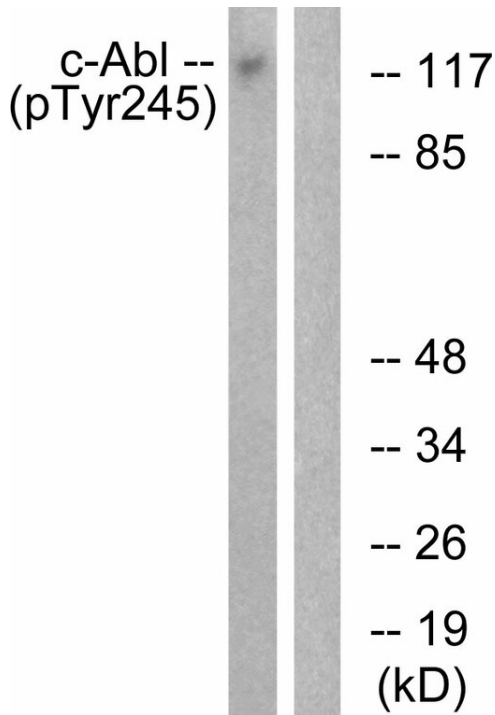
BOSTER

antibody and ELISA experts

BOSTER BIOLOGICAL TECHNOLOGY

Building C21, 3rd and 4th floors, Optics Valley Biomedical Accelerator,
Wuhan East Lake High-tech Development Zone

Web: www.boster.com **Phone:** 027-67845390 **Email:** boster@boster.com



Western blot analysis of lysates from K562 cells treated with Insulin 0.01U/ml 15, using c-Abl (Phospho-Tyr245) Antibody. The lane on the right is blocked with the phospho peptide.