

Basic Information

Product Name	Anti-CCR2 Antibody
Gene Name	CCR2
Source	Rabbit
Clonality	Polyclonal
Isotype	IgG
Species Reactivity	human, mouse, rat
Tested Application	WB, ELISA
Contents	500 ug/ml antibody with PBS, 0.02% NaN ₃ , 1 mg/ml BSA and 50% glycerol.
Immunogen	E.coli-derived human CCR2 recombinant protein (Position: M1-F125).
Concentration	500 ug/ml
Purification	Immunogen affinity purified.
Observed MW	50 kDa
Dilution Ratios	Western blot (WB):1:500-2000 ELISA: 1:100-1000

Storage

12 months from date of receipt, -20°C as supplied.

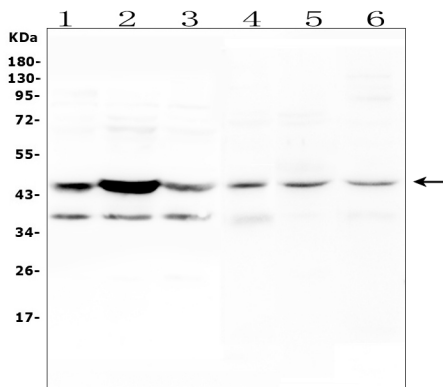
Background Information

C-C chemokine receptor type 2 (CCR2 or CD192 (cluster of differentiation 192) is a protein that in humans is encoded by the CCR2 gene. It is mapped to 3p21.31. The protein encoded by this gene is a receptor for monocyte chemoattractant protein-1, a chemokine which specifically mediates monocyte chemotaxis. Monocyte chemoattractant protein-1 is involved in monocyte infiltration in inflammatory diseases such as rheumatoid arthritis as well as in the inflammatory response against tumors. The encoded protein mediates agonist-dependent calcium mobilization and inhibition of adenylyl cyclase. This protein can also be a coreceptor with CD4 for HIV-1 infection.

Reference

Anti-CCR2 Antibody 被引用在1文献中。

Selected Validation Data



Western blot analysis of CCR2 using anti-CCR2 antibody (A00158-4). The sample well of each lane was loaded with 30 ug of sample under reducing conditions.

Lane 1: human U-87MG whole cell lysates,

Lane 2: human K562 whole cell lysates,

Lane 3: human A549 whole cell lysates,

Lane 4: rat spleen issue lysates,

Lane 5: rat kidney issue lysates,

Lane 6: mouse spleen issue lysates.

After electrophoresis, proteins were transferred to a membrane. Then the membrane was incubated with rabbit anti-CCR2 antigen affinity purified polyclonal antibody (A00158-4) at a dilution of 1:1000 and probed with a goat anti-rabbit IgG-HRP secondary antibody (Catalog # BA1054). The signal is developed using ECL Plus Western Blotting Substrate (Catalog # AR1197). A specific band was detected for CCR2 at approximately 50 kDa. The expected band size for CCR2 is at 42 kDa.