

## Basic Information

<b>Product Name</b>	Anti-CD45/PTPRC Antibody	
<b>Gene Name</b>	PTPRC	
<b>Source</b>	Rabbit	
<b>Clonality</b>	Polyclonal	
<b>Isotype</b>	IgG	
<b>Species Reactivity</b>	mouse, rat	
<b>Tested Application</b>	WB, IHC, ICC/IF, ELISA	
<b>Contents</b>	500 ug/ml antibody with PBS, 0.02% NaN <sub>3</sub> , 1 mg/ml BSA and 50% glycerol.	
<b>Immunogen</b>	E.coli-derived mouse CD45/Ptpcr recombinant protein (Position: N209-E1269).	
<b>Concentration</b>	500 ug/ml	
<b>Purification</b>	Immunogen affinity purified.	
<b>Observed MW</b>	180-250 kDa	
<b>Dilution Ratios</b>	Western blot (WB): 1:500-2000 Immunohistochemistry (IHC): 1:50-400 Immunocytochemistry/Immunofluorescence (ICC/IF): 1:50-400 Enzyme linked immunosorbent assay (ELISA): 1:100-1000 (Boiling the paraffin sections in 10mM citrate buffer,pH6.0,or PH8.0 EDTA repair liquid for 20 mins is required for the staining of formalin/paraffin sections.) Optimal working dilutions must be determined by end user.	

## Storage

12 months from date of receipt, -20°C as supplied. 6 months 2 to 8°C after reconstitution. Avoid repeated freezing and thawing.

## Background Information

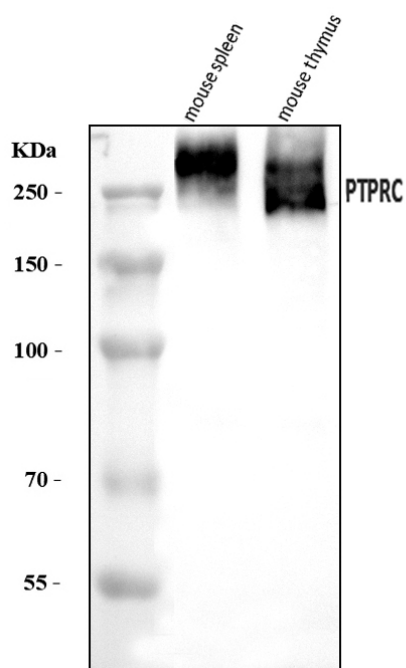
CD45(Cluster of Differentiation 45), also known as PTPRC, LCA or CD45R, is an enzyme that, in humans, is encoded by the PTPRC gene. CD45 is a member of the protein tyrosine phosphatase (PTP) family. CD45 is a major high molecular mass leukocyte cell surface molecule which is also an integral membrane protein tyrosine phosphatase. The cytogenetic location of CD45 is 1q31.3-q32.1. CD45 is especially a prototype for transmembrane protein-tyrosine phosphatase (PTP). Targeted disruption of the CD45 gene leads to enhanced cytokine and interferon receptor-mediated activation of JAKs and STAT proteins. In vitro, CD45 directly dephosphorylates and binds to JAKs. Functionally, CD45 negatively regulates interleukin-3-mediated cellular proliferation, erythropoietin-dependent hematopoiesis, and antiviral responses in vitro and in vivo. CD45 has been best studied in T cells, where it determines T cell receptor signaling thresholds. CD45 is moved into or out of the immunological synapse (IS) membrane microdomain depending on the relative influence of interaction with the

extracellular galectin lattice or the intracellular actin cytoskeleton. Galectin interaction can be finetuned by varying usage of the heavily Oglycosylated spliced regions and sialylation of Nlinked carbohydrates.

## Reference

Anti-CD45/PTPRC Antibody被引用在9文献中。

## Selected Validation Data

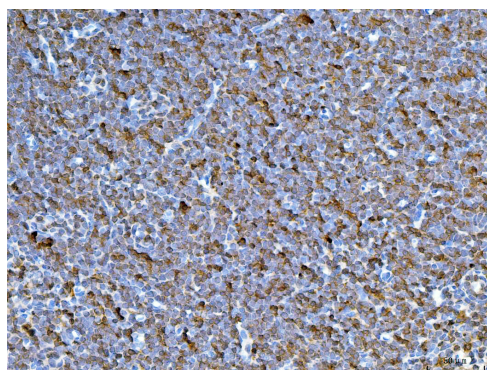


Western blot analysis of CD45/PTPRC using anti-CD45/PTPRC antibody (A00555-4). The sample well of each lane was loaded with 30 ug of sample under reducing conditions.

Lane 1: mouse spleen tissue lysates,

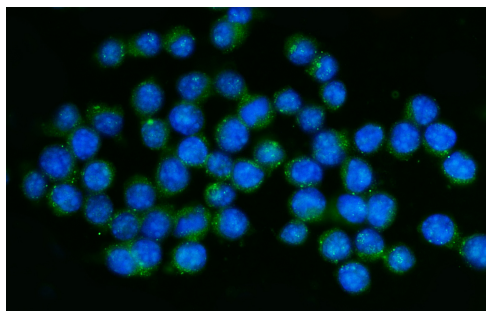
Lane 2: mouse thymus tissue lysates.

After electrophoresis, proteins were transferred to a membrane. Then the membrane was incubated with rabbit anti-CD45/PTPRC antigen affinity purified polyclonal antibody (A00555-4) at a dilution of 1:1000 and probed with a goat anti-rabbit IgG-HRP secondary antibody (Catalog # BA1054). The signal is developed using ECL Plus Western Blotting Substrate (Catalog # AR1197). A specific band was detected for CD45/PTPRC at approximately 180-250 kDa. The expected band size for CD45/PTPRC is at 145 kDa.



IHC analysis of CD45/PTPRC using anti-CD45/PTPRC antibody (A00555-4).

CD45/PTPRC was detected in a paraffin-embedded section of rat lymph node tissue. Biotinylated goat anti-rabbit IgG was used as secondary antibody. The tissue section was incubated with rabbit anti-CD45/PTPRC Antibody (A00555-4) at a dilution of 1:200 and developed using Streptavidin-Biotin-Complex (SABC) (Catalog # SA1022) with DAB (Catalog # AR1027) as the chromogen.



IF analysis of CD45/PTPRC using anti-CD45/PTPRC antibody (A00555-4).

CD45/PTPRC was detected in an immunocytochemical section of RAW264.7 cells. The section was incubated with rabbit anti-CD45/PTPRC Antibody (A00555-4) at a dilution of 1:100.

DyLight®488 Conjugated Goat Anti-Rabbit IgG (Green) (Catalog # BA1127) was used as secondary antibody. The section was counterstained with DAPI (Catalog # AR1176) (Blue).