

## Basic Information

Product Name	Anti-CREB1 Antibody
Gene Name	CREB1
Source	Rabbit
Clonality	Polyclonal
Isotype	IgG
Species Reactivity	human, mouse, rat, monkey
Tested Application	WB, ELISA
Contents	500 ug/ml antibody with PBS, 0.02% NaN <sub>3</sub> , 1 mg/ml BSA and 50% glycerol.
Immunogen	E.coli-derived human CREB1 recombinant protein (Position: A7-R270). Human CREB1 shares 99.6% and 99.2% amino acid (aa) sequence identity with mouse and rat CREB1, respectively.
Concentration	500 ug/ml
Purification	Immunogen affinity purified.
Observed MW	43,49 kDa
Dilution Ratios	Western blot (WB): 1:500-2000 Enzyme linked immunosorbent assay (ELISA):1:100-1000

## Storage

12 months from date of receipt, -20°C as supplied.

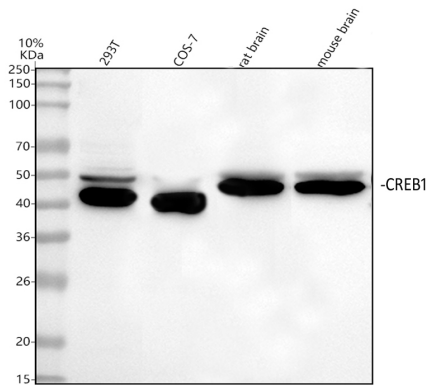
## Background Information

CAMP responsive element binding protein 1, also known as CREB-1, is a protein that in humans is encoded by the CREB1 gene. This gene encodes a transcription factor that is a member of the leucine zipper family of DNA binding proteins. This protein binds as a homodimer to the cAMP-responsive element, an octameric palindrome. The protein is phosphorylated by several protein kinases, and induces transcription of genes in response to hormonal stimulation of the cAMP pathway. Alternate splicing of this gene results in several transcript variants encoding different isoforms.

## Reference

Anti-CREB1 Antibody被引用在2文献中。

## Selected Validation Data



Western blot analysis of CREB1 using anti-CREB1 antibody (A00577-1).

The sample well of each lane was loaded with 30 ug of sample under reducing conditions.

Lane 1: human 293T whole cell lysates,

Lane 2: monkey COS-7 whole cell lysates,

Lane 3: rat brain tissue lysates,

Lane 4: mouse brain tissue lysates.

After electrophoresis, proteins were transferred to a membrane. Then the membrane was incubated with rabbit anti-CREB1 antigen affinity purified polyclonal antibody (A00577-1) at a dilution of 1:1000 and probed with a goat anti-rabbit IgG-HRP secondary antibody (Catalog # BA1054). The signal is developed using ECL Plus Western Blotting Substrate (Catalog # AR1197). A specific band was detected for CREB1 at approximately 43,49 kDa. The expected band size for CREB1 is at 36,37,25 kDa.