

Basic Information

Product Name	Anti-CD68 Antibody	
Gene Name	CD68	
Source	Rabbit	
Clonality	Polyclonal	
Isotype	IgG	
Species Reactivity	human	
Tested Application	IHC, IF, ELISA	
Contents	500 ug/ml antibody with PBS, 0.02% NaN ₃ , 1 mg/ml BSA and 50% glycerol.	
Immunogen	E.coli-derived human CD68 recombinant protein (Position: K154-L354).	
Concentration	500 ug/ml	
Purification	Immunogen affinity purified.	
Dilution Ratios	Immunohistochemistry (IHC):	1:50-400
	Immunofluorescence (IF):	1:50-400
	Enzyme linked immunosorbent assay (ELISA):	1:100-1000
	(Boiling the paraffin sections in 10mM citrate buffer,pH6.0,or PH8.0 EDTA repair liquid for 20 mins is required for the staining of formalin/paraffin sections.) Optimal working dilutions must be determined by end user.	

Storage

12 months from date of receipt, -20°C as supplied. 6 months 2 to 8°C after reconstitution. Avoid repeated freezing and thawing.

Background Information

CD68, cluster of differentiation, is a 110-kD transmembrane glycoprotein that is highly expressed by human monocytes and tissue macrophages. CD68 is a member of a family of hematopoietic mucin-like molecules that includes leukosialin/CD43 and stem cell antigen CD34. The CD68 gene is mapped to 17p13.1. Immunohistochemistry can be used to identify the presence of CD68, which is found in the cytoplasmic granules of a range of different blood cells. It is particularly useful as a marker for the various cells of the macrophage lineage, including monocytes, histiocytes, giant cells, Kupffer cells, and osteoclasts. This allows it to be used to distinguish diseases of otherwise similar appearance, such as the monocyte/macrophage and lymphoid forms of leukaemia (the latter being CD68 negative). Its presence in macrophages also makes it useful in diagnosing conditions related to proliferation or abnormality of these cells, such as malignant histiocytosis, histiocytic lymphoma, and Gaucher's disease.

Reference

Anti-CD68 Antibody 被引用在3文献中。

Selected Validation Data

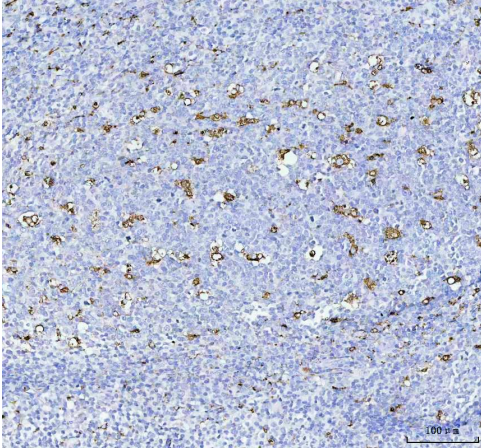


Figure 1. IHC analysis of CD68 using anti-CD68 antibody (A00602-1)

CD68 was detected in a paraffin-embedded section of human tonsil tissue. The tissue section was incubated with rabbit anti-CD68 Antibody (A00602-1) at a dilution of 1:200 and developed using HRP Conjugated Rabbit IgG Super Vision Assay Kit (Catalog # SV0002) with DAB (Catalog # AR1022) as the chromogen.

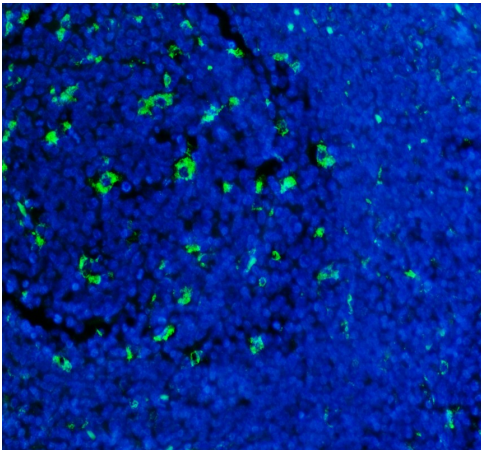


Figure 2. IF analysis of CD68 using anti-CD68 antibody (A00602-1).

CD68 was detected in a paraffin-embedded section of human tonsil tissue. The tissue section was incubated with rabbit anti-CD68 Antibody (A00602-1) at a dilution of 1:100. DyLight®488 Conjugated Goat Anti-Rabbit IgG (Green) (Catalog # BA1127) was used as secondary antibody. The section was counterstained with DAPI (Catalog # AR1176) (Blue).