

## Basic Information

Product Name	Anti-PAI-1/SERPINE1 Antibody
Gene Name	Serpine1
Source	Rabbit
Clonality	Polyclonal
Isotype	IgG
Species Reactivity	mouse, rat
Tested Application	WB, ELISA
Contents	500 ug/ml antibody with PBS, 0.02% NaN <sub>3</sub> , 1 mg/ml BSA and 50% glycerol.
Immunogen	E. coli-derived rat PAI1 recombinant protein (Position: S24-D240). Rat PAI1 shares 83.7% and 90.7% amino acid (aa) sequence identity with human and mouse PAI1, respectively.
Concentration	500 ug/ml
Purification	Immunogen affinity purified.
Observed MW	45 kDa
Dilution Ratios	Western blot (WB):1:500-2000 ELISA: 1:100-1000

## Storage

12 months from date of receipt, -20°C as supplied.

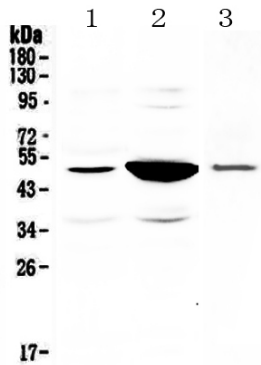
## Background Information

Plasminogen activator inhibitor-1 (PAI-1) also known as endothelial plasminogen activator inhibitor or serpin E1 is a protein that in humans is encoded by the SERPINE1 gene. This gene encodes a member of the serine proteinase inhibitor (serpin) superfamily. This member is the principal inhibitor of tissue plasminogen activator (tPA) and urokinase (uPA), and hence is an inhibitor of fibrinolysis. Defects in this gene are the cause of plasminogen activator inhibitor-1 deficiency (PAI-1 deficiency), and high concentrations of the gene product are associated with thrombophilia. Alternatively spliced transcript variants encoding different isoforms have been found for this gene.

## Reference

Anti-PAI-1/SERPINE1 Antibody被引用在1文献中。

## Selected Validation Data



Western blot analysis of PAI-1/SERPINE1 using anti-PAI-1/SERPINE1 antibody (A00637-2). The sample well of each lane was loaded with 30 ug of sample under reducing conditions.

Lane 1: rat small intestine tissue lysates,

Lane 2: rat kidney tissue lysates,

Lane 3: mouse kidney tissue lysates.

After electrophoresis, proteins were transferred to a membrane. Then the membrane was incubated with rabbit anti-PAI-1/SERPINE1 antigen affinity purified polyclonal antibody (A00637-2) at a dilution of 1:1000 and probed with a goat anti-rabbit IgG-HRP secondary antibody (Catalog # BA1054). The signal is developed using ECL Plus Western Blotting Substrate (Catalog # AR1197). A specific band was detected for PAI-1/SERPINE1 at approximately 45 kDa. The expected band size for PAI-1/SERPINE1 is at 45 kDa .