

Basic Information

| | |
|--------------------|---|
| Product Name | Anti-Plasminogen/PLG Antibody |
| Gene Name | PLG |
| Source | Rabbit |
| Clonality | Polyclonal |
| Isotype | IgG |
| Species Reactivity | human, mouse, rat |
| Tested Application | WB, ELISA |
| Contents | 500 ug/ml antibody with PBS, 0.02% NaN ₃ , 1 mg/ml BSA and 50% glycerol. |
| Immunogen | E.coli-derived human Plasminogen/PLG recombinant protein (Position: V98-P356). |
| Concentration | 500 ug/ml |
| Purification | Immunogen affinity purified. |
| Observed MW | 90 kDa |
| Dilution Ratios | Western blot (WB):1:500-2000 ELISA: 1:100-1000 |

Storage

12 months from date of receipt, -20°C as supplied.

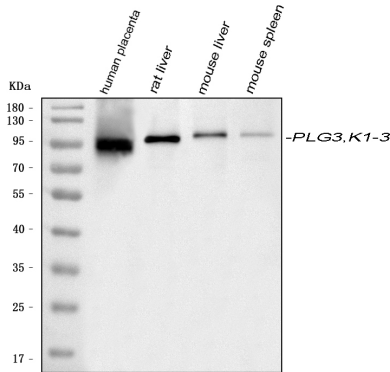
Background Information

Plasminogen (PLG) is a circulating zymogen that is converted to the active enzyme plasmin by cleavage of the peptide bond between arg560 and val561, which is mediated by urokinase (PLAU) and tissue plasminogen activator (PLAT). The main function of plasmin is to dissolve fibrin (see, e.g., FGA) clots. Plasmin, like trypsin, belongs to the family of serine proteinases. Defects in this gene are likely a cause of thrombophilia and ligneous conjunctivitis.

Reference

Anti-Plasminogen/PLG Antibody被引用在4文献中。

Selected Validation Data



Western blot analysis of Plasminogen/PLG using anti-Plasminogen/PLG antibody (A00702-1). The sample well of each lane was loaded with 30 ug of sample under reducing conditions.

Lane 1: human placenta tissue lysates,

Lane 2: rat liver tissue lysates,

Lane 3: mouse liver tissue lysates,

Lane 4: mouse spleen tissue lysates.

After electrophoresis, proteins were transferred to a membrane. Then the membrane was incubated with rabbit anti-Plasminogen/PLG antigen affinity purified polyclonal antibody (A00702-1) at a dilution of 1:1000 and probed with a goat anti-rabbit IgG-HRP secondary antibody (Catalog # BA1054). The signal is developed using ECL Plus Western Blotting Substrate (Catalog # AR1197). A specific band was detected for Plasminogen/PLG at approximately 90 kDa. The expected band size for Plasminogen/PLG is at 91 kDa.