

Basic Information

Product Name	Anti-PKC Alpha/PRKCA Antibody	
Gene Name	PRKCA	
Source	Rabbit	
Clonality	Polyclonal	
Isotype	IgG	
Species Reactivity	human, mouse, rat	
Tested Application	WB, FCM, ELISA	
Contents	500 ug/ml antibody with PBS, 0.02% NaN ₃ , 1 mg/ml BSA and 50% glycerol.	
Immunogen	E.coli-derived human PKC Alpha/PRKCA recombinant protein (Position: Q142-V672).	
Concentration	500 ug/ml	
Purification	Immunogen affinity purified.	
Observed MW	77 kDa	
Dilution Ratios	Western blot (WB):	1:500-2000
	Flow Cytometry (Fixed):	1:50-200
	Enzyme linked immunosorbent assay (ELISA):	1:100-1000

Storage

12 months from date of receipt, -20°C as supplied.

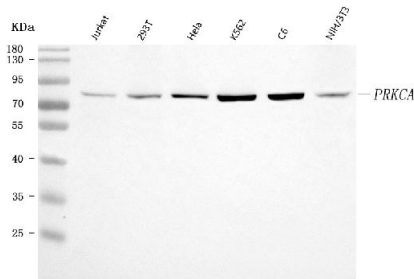
Background Information

Protein kinase C (PKC) is the major phorbol ester receptor. Activation of PKC by calcium ions and the second messenger diacylglycerol is thought to play a central role in the induction of cellular responses to a variety of ligand-receptor systems and in the regulation of cellular responsiveness to external stimuli. Three of these, termed alpha, beta and gamma, are highly homologous. PRKCA1 is mapped to 17q22-q23.2. PRKCA1 regulates cardiac contractility and propensity toward heart failure.

Reference

Anti-PKC Alpha/PRKCA Antibody被引用在2文献中。

Selected Validation Data



Western blot analysis of anti-PKC Alpha/PRKCA antibody (A00743-1). The sample well of each lane was loaded with 30 ug of sample under reducing conditions.

Lane 1: human Jurkat whole cell lysates,

Lane 2: human 293T cell lysates,

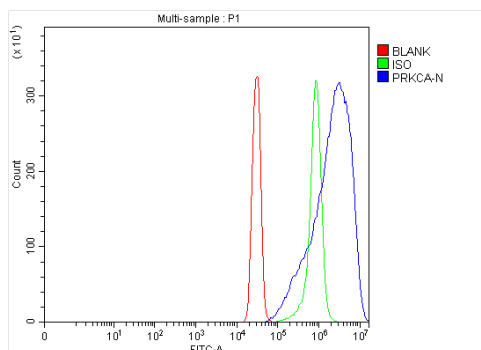
Lane 3: human Hela whole cell lysates,

Lane 4: human K562 whole cell lysates,

Lane 5: rat C6 whole cell lysates,

Lane 6: mouse NIH/3T3 whole cell lysates.

After electrophoresis, proteins were transferred to a membrane. Then the membrane was incubated with rabbit anti-PKC Alpha/PRKCA antigen affinity purified polyclonal antibody (A00743-1) and probed with a goat anti-rabbit IgG-HRP secondary antibody (Catalog # BA1054). The signal is developed using ECL Plus Western Blotting Substrate (Catalog # AR1197). A specific band was detected for PKC Alpha/PRKCA at approximately 80 kDa. The expected band size for PKC Alpha/PRKCA is at 77 kDa.



Flow Cytometry analysis of SiHa cells using anti-PKC Alpha/PRKCA antibody (A00743-1).

Overlay histogram showing SiHa cells stained with A00743-1 (Blue line).

To facilitate intracellular staining, cells were fixed with 4%

paraformaldehyde and permeabilized with permeabilization buffer. The

cells were blocked with 10% normal goat serum. And then incubated with rabbit anti-PKC Alpha/PRKCA Antibody (A00743-1, 1:100). DyLight®488

conjugated goat anti-rabbit IgG (BA1127, 1:100) was used as secondary

antibody. Isotype control antibody (Green line) was rabbit IgG (Catalog # BA1045) (1:100) used under the same conditions. Unlabelled sample (Red line) was also used as a control.