

## Basic Information

Product Name	Anti-Integrin Beta 1/ITGB1 Antibody	
Gene Name	ITGB1	
Source	Rabbit	
Clonality	Polyclonal	
Isotype	IgG	
Species Reactivity	human, rat	
Tested Application	WB, ELISA	
Contents	500 ug/ml antibody with PBS, 0.02% NaN3, 1 mg/ml BSA and 50% glycerol.	
Immunogen	E.coli-derived human Integrin Beta 1/ITGB1 recombinant protein (Position: G572-E693).	
Concentration	500 ug/ml	
Purification	Immunogen affinity purified.	
Observed MW	120-130 kDa	
Dilution Ratios	Western blot (WB): 1:500-2000 Enzyme linked immunosorbent assay (ELISA):1:100-1000	

## Storage

12 months from date of receipt, -20°C as supplied.

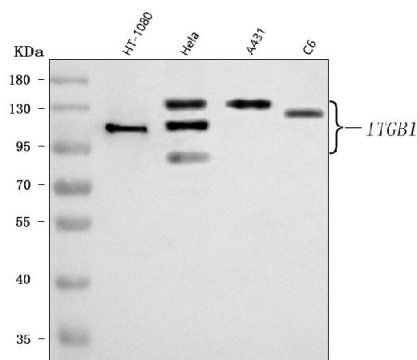
## Background Information

Integrin beta-1, also known as CD29, is a protein that in humans is encoded by the ITGB1 gene. CD29 is an integrin unit associated with very late antigen receptors. It is known to conjoin with alpha-3 subunit to create alpha3beta1 complex that reacts to such molecules as netrin-1 and reelin. This gene contains a beta subunit that appears to be analogous to band-3 of integrin. It is mapped to 10p11.22. It is found that FER mediates crosstalk between CDH2 and CD29. Integrin family members are membrane receptors involved in cell adhesion and recognition in a variety of processes including embryogenesis, hemostasis, tissue repair, immune response and metastatic diffusion of tumor cells. The protein encoded by this gene is a beta subunit.

## Reference

Anti-Integrin Beta 1/ITGB1 Antibody被引用在1文献中。

## Selected Validation Data



Western blot analysis of anti-Integrin Beta 1/ITGB1 antibody (A00772-3). The sample well of each lane was loaded with 30 ug of sample under reducing conditions.

Lane 1: human HT-1080 whole cell lysates,

Lane 2: human Hela whole cell lysates,

Lane 3: human A431 whole cell lysates,

Lane 4: rat C6 whole cell lysates.

After electrophoresis, proteins were transferred to a membrane.

Then the membrane was incubated with rabbit anti-Integrin Beta 1/ITGB1 antigen affinity purified polyclonal antibody (A00772-3) and probed with a goat anti-rabbit IgG-HRP secondary antibody (Catalog # BA1054). The signal is developed using ECL Plus Western Blotting Substrate (Catalog # AR1197). A specific band was detected for Integrin Beta 1/ITGB1 at approximately 88,115-140 kDa. The expected band size for Integrin Beta 1/ITGB1 is at 88 kDa.