

Basic Information

Product Name	Anti-TGF beta 2/TGFB2 Antibody	
Gene Name	TGFB2	
Source	Rabbit	
Clonality	Polyclonal	
Isotype	IgG	
Species Reactivity	human	
Tested Application	WB, IHC	
Contents	500 ug/ml antibody with PBS, 0.02% NaN ₃ , 1 mg/ml BSA and 50% glycerol.	
Immunogen	A synthetic peptide corresponding to a sequence at the C-terminus of human TGF beta 2, identical to the related mouse and rat sequences.	
Concentration	500 ug/ml	
Purification	Immunogen affinity purified.	
Observed MW	48 kDa	
Dilution Ratios	Western blot (WB): 1:500-2000 Immunohistochemistry (IHC): 1:50-400 (Boiling the paraffin sections in 10mM citrate buffer, pH6.0, or PH8.0 EDTA repair liquid for 20 mins is required for the staining of formalin/paraffin sections.) Optimal working dilutions must be determined by end user.	

Storage

12 months from date of receipt, -20°C as supplied. 6 months 2 to 8°C after reconstitution. Avoid repeated freezing and thawing.

Background Information

This gene encodes a secreted ligand of the TGF-beta (transforming growth factor-beta) superfamily of proteins. Ligands of this family bind various TGF-beta receptors leading to recruitment and activation of SMAD family transcription factors that regulate gene expression. The encoded preproprotein is proteolytically processed to generate a latency-associated peptide (LAP) and a mature peptide, and is found in either a latent form composed of a mature peptide homodimer, a LAP homodimer, and a latent TGF-beta binding protein, or in an active form consisting solely of the mature peptide homodimer. The mature peptide may also form heterodimers with other TGF-beta family members. Disruption of the TGF-beta/SMAD pathway has been implicated in a variety of human cancers. A chromosomal translocation that includes this gene is associated with Peters' anomaly, a congenital defect of the anterior chamber of the eye. Mutations in this gene may be associated with Loeys-Dietz syndrome.

This gene encodes multiple isoforms that may undergo similar proteolytic processing.

Reference

Anti-TGF beta 2/TGFB2 Antibody被引用在4文献中。

Selected Validation Data

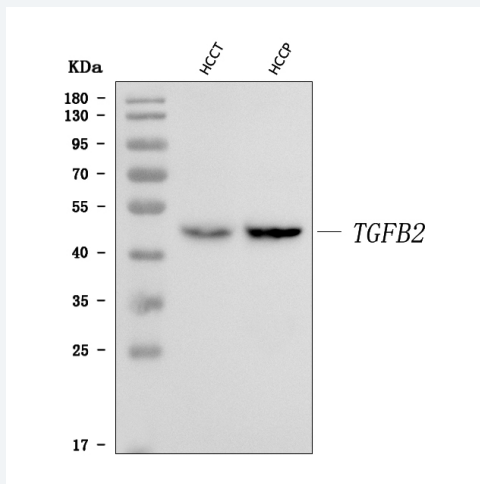


Figure 1. Western blot analysis of TGF beta 2/TGFB2 using anti-TGF beta 2/TGFB2 antibody (A00892-1). The sample well of each lane was loaded with 30 ug of sample under reducing conditions.

Lane 1: HCCT whole cell lysates,

Lane 2: HCCP whole cell lysates.

After electrophoresis, proteins were transferred to a membrane. Then the membrane was incubated with rabbit anti-TGF beta 2/TGFB2 antigen affinity purified polyclonal antibody (A00892-1) at a dilution of 1:1000 and probed with a goat anti-rabbit IgG-HRP secondary antibody (Catalog # BA1054). The signal is developed using ECL Plus Western Blotting Substrate (Catalog # AR1197). A specific band was detected for TGF beta 2/TGFB2 at approximately 48 kDa. The expected band size for TGF beta 2/TGFB2 is at 48 kDa.

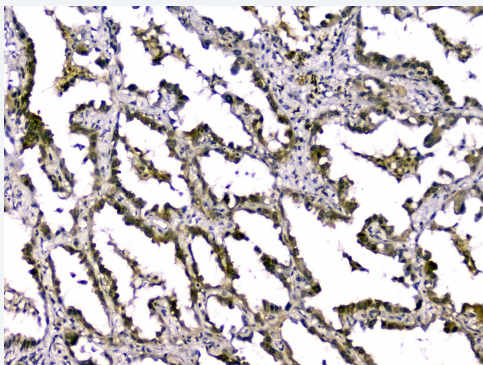


Figure 2. IHC analysis of TGF beta 2/TGFB2 using anti-TGF beta 2/TGFB2 antibody (A00892-1).

TGF beta 2/TGFB2 was detected in a paraffin-embedded section of human lung cancer tissue. Biotinylated goat anti-rabbit IgG was used as secondary antibody. The tissue section was incubated with rabbit anti-TGF beta 2/TGFB2 Antibody (A00892-1) at a dilution of 1:200 and developed using Streptavidin-Biotin-Complex (SABC) (Catalog # SA1022) with DAB (Catalog # AR1022) as the chromogen.