

## Basic Information

Product Name	Anti-CD36 Antibody	
Gene Name	CD36	
Source	Rabbit	
Clonality	Polyclonal	
Isotype	IgG	
Species Reactivity	human, mouse, rat	
Tested Application	WB, FCM, ELISA	
Contents	500 ug/ml antibody with PBS, 0.02% NaN <sub>3</sub> , 1 mg/ml BSA and 50% glycerol.	
Immunogen	E.coli-derived human CD36 recombinant protein (Position: K233-N439).	
Concentration	500 ug/ml	
Purification	Immunogen affinity purified.	
Observed MW	88 kDa	
Dilution Ratios	Western blot (WB):	1:500-2000
	Flow Cytometry (Fixed):	1:50-200
	Enzyme linked immunosorbent assay (ELISA):	1:100-1000

## Storage

12 months from date of receipt, -20°C as supplied.

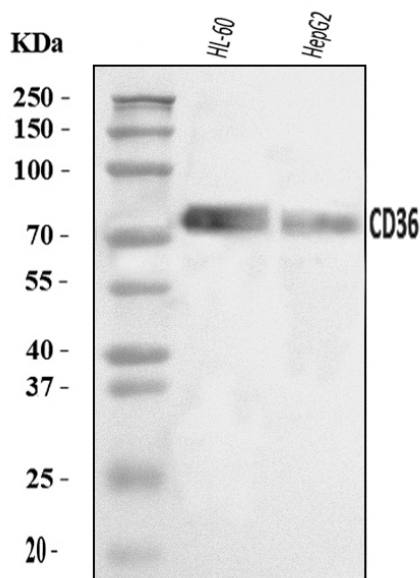
## Background Information

CD36 (cluster of differentiation 36), also known as FAT (fatty acid translocase), FAT/CD36, (FAT)/CD36, SCARB3, GP88, glycoprotein IV (gpIV), and glycoprotein IIIb (gpIIIb), is an integral membrane protein found on the surface of many cell types in vertebrate animals. CD36 is a member of the class B scavenger receptor family of cell surface proteins. It is mapped to 7q21.11. And CD36 binds many ligands including collagen, thrombospondin, erythrocytes parasitized with Plasmodium falciparum, oxidized low absorbance lipoprotein, native lipoproteins, oxidized phospholipids, and long-chain fatty acids. In addition, CD36 function in long-chain fatty acid uptake and signaling can be irreversibly inhibited by sulfo-N-succinimidyl oleate (SSO), which binds lysine 164 within a hydrophobic pocket shared by several CD36 ligands, e.g. fatty acid and oxLDL.

## Reference

Anti-CD36 Antibody 被引用在3文献中。

## Selected Validation Data

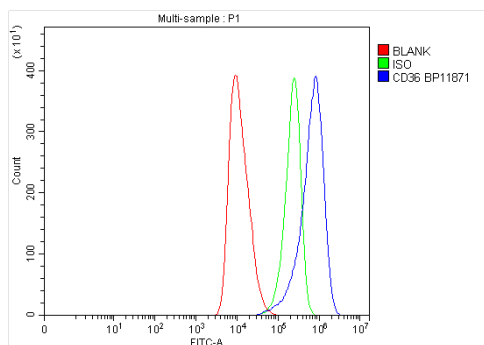


Western blot analysis of CD36 using anti-CD36 antibody (A01189-1). The sample well of each lane was loaded with 30 ug of sample under reducing conditions.

Lane 1: human HL-60 whole cell lysates,

Lane 2: human HepG2 whole cell lysates.

After electrophoresis, proteins were transferred to a membrane. Then the membrane was incubated with rabbit anti-CD36 antigen affinity purified polyclonal antibody (A01189-1) at a dilution of 1:1000 and probed with a goat anti-rabbit IgG-HRP secondary antibody (Catalog # BA1054). The signal is developed using ECL Plus Western Blotting Substrate (Catalog # AR1197). A specific band was detected for CD36 at approximately 88 kDa. The expected band size for CD36 is at 53 kDa.



Flow Cytometry analysis of HEL cells using anti-CD36 antibody (A01189-1).

Overlay histogram showing HEL cells stained with A01189-1 (Blue line). The cells were blocked with 10% normal goat serum. And then incubated with rabbit anti-CD36 Antibody (A01189-1) at 1:100 dilution for 30 min at 20°C. DyLight®488 conjugated goat anti-rabbit IgG (BA1127) was used as secondary antibody at 1:100 dilution for 30 minutes at 20°C. Isotype control antibody (Green line) was rabbit IgG at 1:100 dilution used under the same conditions. Unlabelled sample without incubation with primary antibody and secondary antibody (Red line) was used as a blank control.