

## Basic Information

Product Name	Anti-Vinculin/VCL Antibody
Gene Name	VCL
Source	Rabbit
Clonality	Polyclonal
Isotype	IgG
Species Reactivity	human, mouse, rat
Tested Application	WB
Contents	500 ug/ml antibody with PBS, 0.02% NaN <sub>3</sub> , 1 mg/ml BSA and 50% glycerol.
Immunogen	E.coli-derived human Vinculin recombinant protein (Position: E930-Q1134). Human Vinculin shares 87.7% amino acid (aa) sequence identity with both mouse and rat Vinculin.
Concentration	500 ug/ml
Purification	Immunogen affinity purified.
Observed MW	124 kDa
Dilution Ratios	Western blot (WB):1:500-2000

## Storage

12 months from date of receipt, -20°C as supplied.

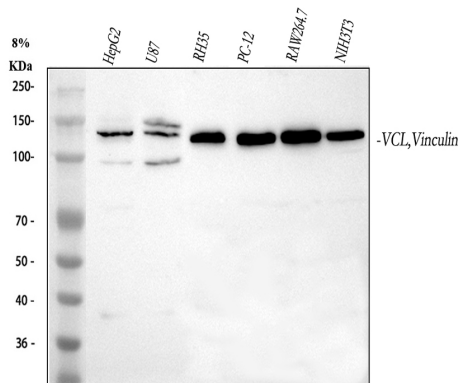
## Background Information

Vinculin is a cytoskeletal protein associated with cell-cell and cell-matrix junctions, where it is thought to function as one of several interacting proteins involved in anchoring F-actin to the membrane. Defects in VCL are the cause of cardiomyopathy dilated type 1W. Dilated cardiomyopathy is a disorder characterized by ventricular dilation and impaired systolic function, resulting in congestive heart failure and arrhythmia. Multiple alternatively spliced transcript variants have been found for this gene, but the biological validity of some variants has not been determined.

## Reference

Anti-Vinculin/VCL Antibody被引用在6文献中。

## Selected Validation Data



Western blot analysis of Vinculin/VCL using anti-Vinculin/VCL antibody (A01207). The sample well of each lane was loaded with 30 ug of sample under reducing conditions.

Lane 1: human HepG2 whole cell lysates,

Lane 2: human U87 whole cell lysates,

Lane 3: rat RH-35 whole cell lysates,

Lane 4: rat PC-12 whole cell lysates,

Lane 5: mouse RAW264.7 whole cell lysates,

Lane 6: mouse NIH/3T3 whole cell lysates.

After electrophoresis, proteins were transferred to a membrane. Then the membrane was incubated with rabbit anti-Vinculin/VCL antigen affinity purified polyclonal antibody (A01207) at a dilution of 1:1000 and probed with a goat anti-rabbit IgG-HRP secondary antibody (Catalog # BA1054). The signal is developed using ECL Plus Western Blotting Substrate (Catalog # AR1197). A specific band was detected for Vinculin/VCL at approximately 124 kDa. The expected band size for Vinculin/VCL is at 124 kDa.