

## Basic Information

Product Name	Anti-FBP1 Antibody	
Gene Name	FBP1	
Source	Rabbit	
Clonality	Polyclonal	
Isotype	IgG	
Species Reactivity	human, mouse	
Tested Application	WB, ICC/IF, ELISA	
Contents	500 ug/ml antibody with PBS, 0.02% NaN <sub>3</sub> , 1 mg/ml BSA and 50% glycerol.	
Immunogen	E.coli-derived human FBP1 recombinant protein (Position: M1-A44).	
Concentration	500 ug/ml	
Purification	Immunogen affinity purified.	
Observed MW	37 kDa	
Dilution Ratios	Western blot (WB): 1:500-2000 Immunocytochemistry/Immunofluorescence (ICC/IF): 1:50-400 Enzyme linked immunosorbent assay (ELISA): 1:100-1000	

## Storage

12 months from date of receipt, -20°C as supplied. 6 months 2 to 8°C after reconstitution. Avoid repeated freezing and thawing.

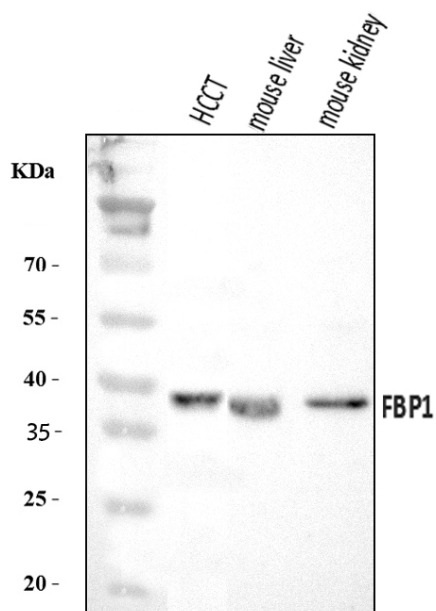
## Background Information

Fructose-1,6-bisphosphatase 1 is a protein that in humans is encoded by the FBP1 gene. Fructose-1,6-bisphosphatase 1, a gluconeogenesis regulatory enzyme, catalyzes the hydrolysis of fructose 1,6-bisphosphate to fructose 6-phosphate and inorganic phosphate. Fructose-1,6-diphosphatase deficiency is associated with hypoglycemia and metabolic acidosis.

## Reference

Anti-FBP1 Antibody被引用在1文献中。

## Selected Validation Data



Western blot analysis of FBP1 using anti-FBP1 antibody (A01377-1).

The sample well of each lane was loaded with 30 ug of sample under reducing conditions.

Lane 1: HCCT tissue lysates,

Lane 2: mouse liver tissue lysates,

Lane 3: mouse kidney tissue lysates.

After electrophoresis, proteins were transferred to a membrane.

Then the membrane was incubated with rabbit anti-FBP1 antigen

affinity purified polyclonal antibody (A01377-1) at a dilution of

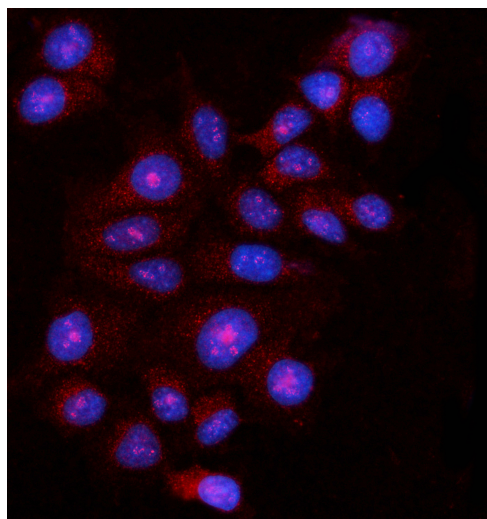
1:1000 and probed with a goat anti-rabbit IgG-HRP secondary

antibody (Catalog # BA1054). The signal is developed using ECL

Plus Western Blotting Substrate (Catalog # AR1197). A specific

band was detected for FBP1 at approximately 37 kDa. The expected

band size for FBP1 is at 37 kDa.



IF analysis of FBP1 using anti-FBP1 antibody (A01377-1).

FBP1 was detected in an immunocytochemical section of MCF-7

cells. The section was incubated with rabbit anti-FBP1 Antibody

(A01377-1) at a dilution of 1:100. Dylight594-conjugated Anti-rabbit

IgG Secondary Antibody (red)(Catalog#BA1142) was used as

secondary antibody. The section was counterstained with DAPI

(Catalog # AR1176) (Blue).