

Basic Information

| | | |
|--------------------|---|--|
| Product Name | Anti-IBA1/AIF1 Antibody | |
| Gene Name | AIF1 | |
| Source | Rabbit | |
| Clonality | Polyclonal | |
| Isotype | IgG | |
| Species Reactivity | human | |
| Tested Application | WB, IHC | |
| Contents | 500 ug/ml antibody with PBS, 0.02% NaN ₃ , 1 mg/ml BSA and 50% glycerol. | |
| Immunogen | A synthetic peptide corresponding to a sequence at the C-terminus of human Iba1, different from the related mouse sequence by seven amino acids, and from the related rat sequence by six amino acids. | |
| Concentration | 500 ug/ml | |
| Purification | Immunogen affinity purified. | |
| Observed MW | 17 kDa | |
| Dilution Ratios | Western blot (WB): 1:500-2000 Immunohistochemistry (IHC): 1:50-400 (Boiling the paraffin sections in 10mM citrate buffer, pH6.0, or PH8.0 EDTA repair liquid for 20 mins is required for the staining of formalin/paraffin sections.) Optimal working dilutions must be determined by end user. | |

Storage

12 months from date of receipt, -20°C as supplied.

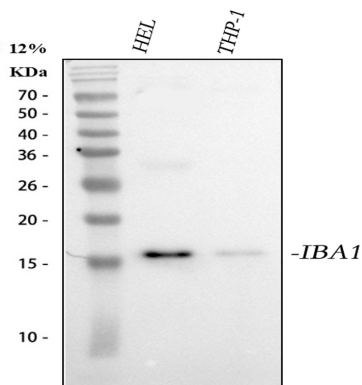
Background Information

Allograft inflammatory factor 1 (AIF-1), also known as ionized calcium-binding adapter molecule 1 (IBA1), is a protein that in humans is encoded by the AIF1 gene. This gene encodes a protein that binds actin and calcium. And this gene is induced by cytokines and interferon and may promote macrophage activation and growth of vascular smooth muscle cells and T-lymphocytes. Polymorphisms in this gene may be associated with systemic sclerosis. Alternative splicing results in multiple transcript variants, but the full-length and coding nature of some of these variants is not certain.

Reference

Anti-IBA1/AIF1 Antibody被引用在1文献中。

Selected Validation Data

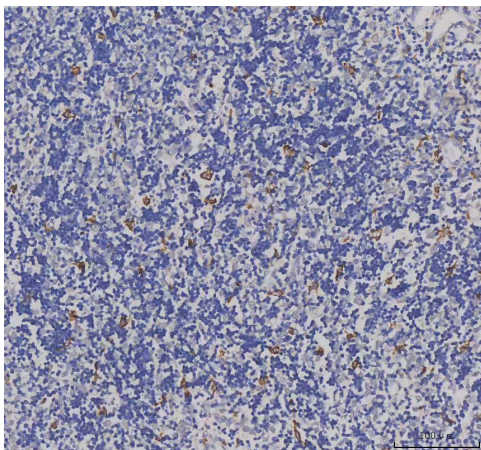


Western blot analysis of IBA1/AIF1 using anti-IBA1/AIF1 antibody (A01394). The sample well of each lane was loaded with 30 ug of sample under reducing conditions.

Lane 1: human HEL whole cell lysates,

Lane 2: human THP-1 whole cell lysates.

After electrophoresis, proteins were transferred to a membrane. Then the membrane was incubated with rabbit anti-IBA1/AIF1 antigen affinity purified polyclonal antibody (A01394) at a dilution of 1:1000 and probed with a goat anti-rabbit IgG-HRP secondary antibody (Catalog # BA1054). The signal is developed using ECL Plus Western Blotting Substrate (Catalog # AR1197). A specific band was detected for IBA1/AIF1 at approximately 17 kDa. The expected band size for IBA1/AIF1 is at 17 kDa.



IHC analysis of IBA1/AIF1 using anti-IBA1/AIF1 antibody (A01394). IBA1/AIF1 was detected in a paraffin-embedded section of human spleen tissue. The tissue section was incubated with rabbit anti-IBA1/AIF1 Antibody (A01394) at a dilution of 1:200 and developed using HRP Conjugated Rabbit IgG Super Vision Assay Kit (Catalog # SV0002) with DAB (Catalog # AR1027) as the chromogen.