

Basic Information

Product Name	Anti-Eotaxin/CCL11 Antibody	
Gene Name	CCL11	
Source	Rabbit	
Clonality	Polyclonal	
Isotype	IgG	
Species Reactivity	rat	
Tested Application	IHC, ELISA	
Contents	500 ug/ml antibody with PBS, 0.02% NaN ₃ , 1 mg/ml BSA and 50% glycerol.	
Immunogen	E.coli-derived rat Eotaxin/Ccl11 recombinant protein (Position: H24-P97).	
Concentration	500 ug/ml	
Purification	Immunogen affinity purified.	
Dilution Ratios	Immunohistochemistry (IHC): 1:50-400 ELISA: 1:100-1000 (Boiling the paraffin sections in 10mM citrate buffer,pH6.0,or PH8.0 EDTA repair liquid for 20 mins is required for the staining of formalin/paraffin sections.) Optimal working dilutions must be determined by end user.	

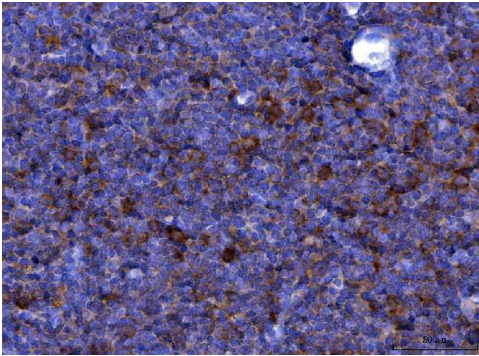
Storage

12 months from date of receipt, -20°C as supplied.

Background Information

CCL11 (Chemokine (C-C motif) ligand 11), also known as Eotaxin, is a small cytokine belonging to the CC chemokine family. Eotaxin selectively recruits eosinophils by inducing their chemotaxis, and therefore, is implicated in allergic responses. The effects of Eotaxin are mediated by its binding to a G-protein-linked receptor known as a chemokine receptor. Chemokine receptors for which Eotaxin is a ligand include CCR2, CCR3 and CCR5. However, it has been found that eotaxin-1 (CCL11) has high degree selectivity for its receptor, such that they are inactive on neutrophils and monocytes, which do not express CCR3. The gene for human Eotaxin is encoded on three exons and is located on chromosome 17q12.

Selected Validation Data



IHC analysis of Eotaxin/CCL11 using anti-Eotaxin/CCL11 antibody (A01438-2) .

Eotaxin/CCL11 was detected in a paraffin-embedded section of rat lymphaden tissue. The tissue section was incubated with rabbit anti-Eotaxin/CCL11 Antibody (A01438-2) at a dilution of 1:200 and developed using HRP Conjugated Rabbit IgG Super Vision Assay Kit (Catalog # SV0002) with DAB (Catalog # AR1027) as the chromogen.