

Basic Information

Product Name	Anti-Integrin Alpha V/ITGAV Antibody
Gene Name	ITGAV
Source	Rabbit
Clonality	Polyclonal
Isotype	IgG
Species Reactivity	human
Tested Application	WB, FCM
Contents	500 ug/ml antibody with PBS, 0.02% NaN ₃ , 1 mg/ml BSA and 50% glycerol.
Immunogen	E.coli-derived human Integrin alpha V/ITGAV recombinant protein (Position: H732-D970).
Concentration	500 ug/ml
Purification	Immunogen affinity purified.
Observed MW	130-140 kDa
Dilution Ratios	Western blot (WB): 1:500-2000 Flow Cytometry (Fixed):1:50-200

Storage

12 months from date of receipt, -20°C as supplied.

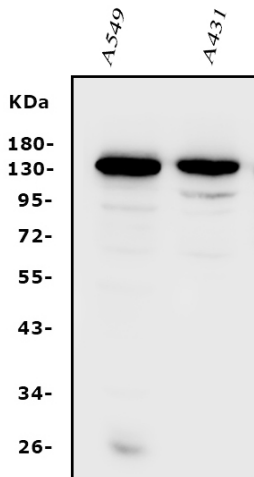
Background Information

Integrin alpha-V is a protein that in humans is encoded by the ITGAV gene. It is a member of the beta 3 integrin subfamily (cytoadhesins). The human locus for the av gene (VNRA) was previously mapped to the long arm of chromosome 2. Sims et al. (2000) localized the VNRA gene to 2q31. The gene contains 30 exons and spans over 93 kb of genomic DNA. It functions as a receptor for a group of proteins that includes vitronectin, fibrinogen, thrombospondin, and von Willebrand factor.

Reference

Anti-Integrin Alpha V/ITGAV Antibody 被引用在 3 文献中。

Selected Validation Data

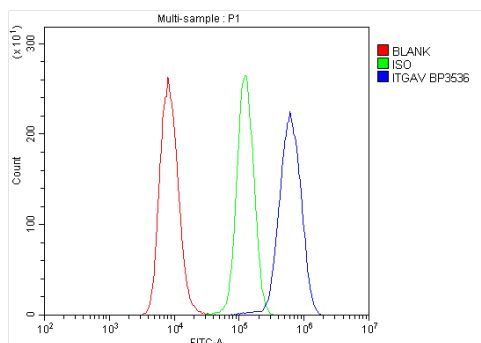


Western blot analysis of Integrin Alpha V/ITGAV using anti-Integrin Alpha V/ITGAV antibody (A01561-2). The sample well of each lane was loaded with 30 ug of sample under reducing conditions.

Lane 1: human A549 whole cell lysates,

Lane 2: human A431 whole cell lysates.

After electrophoresis, proteins were transferred to a membrane. Then the membrane was incubated with rabbit anti-Integrin Alpha V/ITGAV antigen affinity purified polyclonal antibody (A01561-2) at a dilution of 1:1000 and probed with a goat anti-rabbit IgG-HRP secondary antibody (Catalog # BA1054). The signal is developed using ECL Plus Western Blotting Substrate (Catalog # AR1197). A specific band was detected for Integrin Alpha V/ITGAV at approximately 130-140 kDa. The expected band size for Integrin Alpha V/ITGAV is at 116 kDa.



Flow Cytometry analysis of Raji cells using anti-Integrin Alpha V/ITGAV antibody (A01561-2).

Overlay histogram showing Raji cells stained with A01561-2 (Blue line).

The cells were fixed with 4% paraformaldehyde and blocked with 10% normal goat serum. And then incubated with rabbit anti-Integrin Alpha V/ITGAV Antibody (A01561-2) at 1:100 dilution for 30 min at 20°C.

DyLight®488 conjugated goat anti-rabbit IgG (BA1127) was used as secondary antibody at 1:100 dilution for 30 minutes at 20°C. Isotype control antibody (Green line) was rabbit IgG at 1:100 dilution used under the same conditions. Unlabelled sample without incubation with primary antibody and secondary antibody (Red line) was used as a blank control.