

Basic Information

Product Name	Anti-Claudin 1/CLDN1 Antibody
Gene Name	CLDN1
Source	Rabbit
Clonality	Polyclonal
Isotype	IgG
Species Reactivity	human
Tested Application	WB,ELISA
Contents	500 ug/ml antibody with PBS, 0.02% NaN ₃ , 1 mg/ml BSA and 50% glycerol.
Immunogen	E.coli-derived human Claudin 1/CLDN1 recombinant protein (Position: F96-V211).
Concentration	500 ug/ml
Purification	Immunogen affinity purified.
Observed MW	23 kDa
Dilution Ratios	Western blot (WB): 1:500-2000 Enzyme linked immunosorbent assay (ELISA):1:100-1000

Storage

12 months from date of receipt, -20°C as supplied. 6 months 2 to 8°C after reconstitution. Avoid repeated freezing and thawing.

Background Information

Claudin-1 is a protein that in humans is encoded by the CLDN1 gene. Tight junctions represent one mode of cell-to-cell adhesion in epithelial or endothelial cell sheets, forming continuous seals around cells and serving as a physical barrier to prevent solutes and water from passing freely through the paracellular space. These junctions are comprised of sets of continuous networking strands in the outwardly facing cytoplasmic leaflet, with complementary grooves in the inwardly facing extracytoplasmic leaflet. The protein encoded by this gene, a member of the claudin family, is an integral membrane protein and a component of tight junction strands. Loss of function mutations result in neonatal ichthyosis-sclerosing cholangitis syndrome.

Selected Validation Data

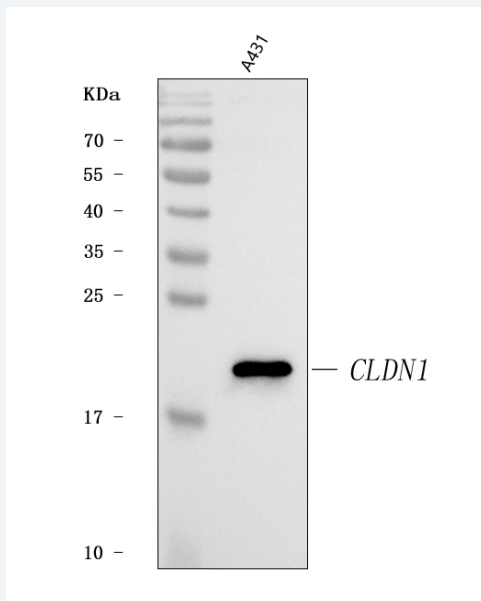


Figure 1. Western blot analysis of anti- Claudin 1/CLDN1 antibody (A01585-3). The sample well of each lane was loaded with 30ug of sample under reducing conditions.

Lane 1: human A431 whole cell lysates.

Use rabbit anti- Claudin 1/CLDN1 1:1000, probed with a goat anti-rabbit IgG-HRP secondary antibody. The signal is developed using an Enhanced Chemiluminescent detection (ECL) kit (Catalog#EK1002). A specific band was detected for Claudin 1/CLDN1 at approximately 22KD. The expected band size for Claudin 1/CLDN1 is at 28KD.