

Basic Information

Product Name	Anti-TPX2 Antibody
Gene Name	TPX2
Source	Rabbit
Clonality	Polyclonal
Isotype	IgG
Species Reactivity	human, mouse, rat
Tested Application	WB, ELISA
Contents	500 ug/ml antibody with PBS, 0.02% NaN ₃ , 1 mg/ml BSA and 50% glycerol.
Immunogen	E. coli-derived human TPX2 recombinant protein (Position: D15-Q93).
Concentration	500 ug/ml
Purification	Immunogen affinity purified.
Observed MW	100 kDa
Dilution Ratios	Western blot (WB):1:500-2000 ELISA: 1:100-1000

Storage

12 months from date of receipt, -20°C as supplied.

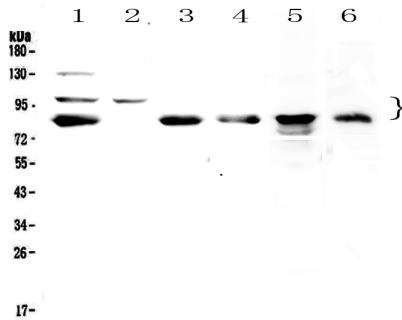
Background Information

Targeting protein for Xklp2, also known as C20ORF1, is a protein that in humans is encoded by the TPX2 gene. It is mapped to chromosome 20q11.2. It was concluded that even in the presence of duplicated centrosomes, spindle formation requires the function of TPX2 to generate a stable bipolar spindle with overlapping antiparallel microtubule arrays. At the onset of mitosis, GOLGA2 interacts with importin-alpha, liberating TPX2 from importin-alpha, allowing TPX2 to activates AURKA kinase and stimulates local microtubule nucleation.

Reference

Anti-TPX2 Antibody被引用在1文献中。

Selected Validation Data



Western blot analysis of TPX2 using anti-TPX2 antibody (A01610-1). The sample well of each lane was loaded with 30 ug of sample under reducing conditions.

Lane 1: human Hela whole cell lysates,

Lane 2: human COLO-320 whole cell lysates,

Lane 3: human U-87MG whole cell lysates,

Lane 4: human SGC-7901 whole cell lysates,

Lane 5: rat PC-12 whole cell lysates,

Lane 6: mouse HEPA1-6 whole cell lysates.

After electrophoresis, proteins were transferred to a membrane. Then the membrane was incubated with rabbit anti-TPX2 antigen affinity purified polyclonal antibody (A01610-1) at a dilution of 1:1000 and probed with a goat anti-rabbit IgG-HRP secondary antibody (Catalog # BA1054). The signal is developed using ECL Plus Western Blotting Substrate (Catalog # AR1197). A specific band was detected for TPX2 at approximately 100 kDa. The expected band size for TPX2 is at 86 kDa.