

Basic Information

Product Name	Anti-Cytokeratin 1/KRT1 Antibody	
Gene Name	Krt1	
Source	Rabbit	
Clonality	Polyclonal	
Isotype	IgG	
Species Reactivity	mouse	
Tested Application	WB, IHC, IF, ELISA	
Contents	500 ug/ml antibody with PBS, 0.02% NaN ₃ , 1 mg/ml BSA and 50% glycerol.	
Immunogen	E.coli-derived mouse Cytokeratin 1/Krt1 recombinant protein (Position: L223-Q439).	
Concentration	500 ug/ml	
Purification	Immunogen affinity purified.	
Observed MW	66 kDa	
Dilution Ratios	Western blot (WB): 1:500-2000 Immunohistochemistry (IHC): 1:50-400 Immunofluorescence (IF): 1:50-400 Enzyme linked immunosorbent assay (ELISA): 1:100-1000 (Boiling the paraffin sections in 10mM citrate buffer,pH6.0,or PH8.0 EDTA repair liquid for 20 mins is required for the staining of formalin/paraffin sections.) Optimal working dilutions must be determined by end user.	

Storage

12 months from date of receipt, -20°C as supplied. 6 months 2 to 8°C after reconstitution. Avoid repeated freezing and thawing.

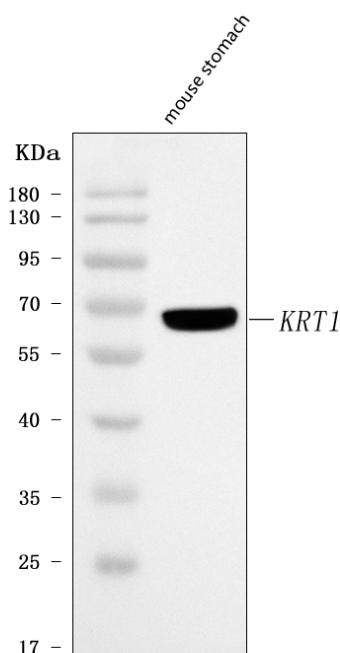
Background Information

Keratin 1 (KRT1), also known as Cytokeratin 1, or Keratin, type II cytoskeletal 1, is a member of the keratin family. It is specifically expressed in the spinous and granular layers of the epidermis with family member keratin 10. Mutations in this gene have been associated with the variants of bullous congenital ichthyosiform erythroderma in which the palms and soles of the feet are affected. The type II cytokeratins consist of basic or neutral proteins which are arranged in pairs of heterotypic keratin chains coexpressed during differentiation of simple and stratified epithelial tissues. And this type II cytokeratin is specifically expressed in the spinous and granular layers of the epidermis with family member KRT10 and mutations in these genes have been associated with bullous congenital ichthyosiform erythroderma. The type II cytokeratins are clustered in a region of chromosome 12q12-q13.

Reference

Anti-Cytokeratin 1/KRT1 Antibody被引用在1文献中。

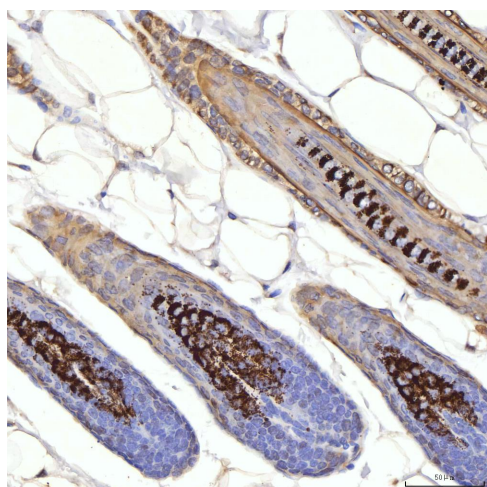
Selected Validation Data



Western blot analysis of anti-Cytokeratin 1/Krt1 antibody (A01639-1). The sample well of each lane was loaded with 30ug of sample under reducing conditions.

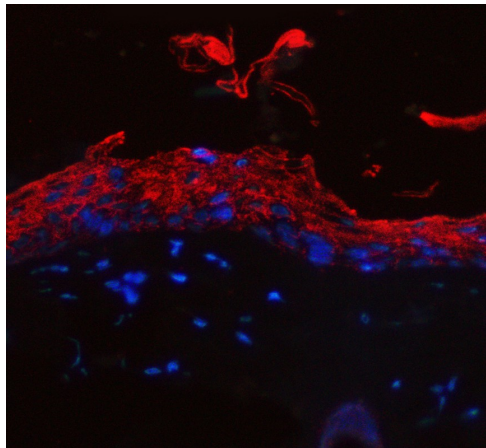
Lane 1: mouse stomach tissue lysates.

Use rabbit anti-Cytokeratin 1/Krt1 1:1000, probed with a goat anti-rabbit IgG-HRP secondary antibody. The signal is developed using an Enhanced Chemiluminescent detection (ECL) kit (Catalog#EK1002). A specific band was detected for Cytokeratin 1/Krt1 at approximately 66KD. The expected band size for Cytokeratin 1/Krt1 is at 66KD.



IHC analysis of Cytokeratin 1/KRT1 using anti-Cytokeratin 1/KRT1 antibody (A01639-1).

Cytokeratin 1/KRT1 was detected in a paraffin-embedded section of mouse skin tissue. The tissue section was incubated with rabbit anti-Cytokeratin 1/KRT1 Antibody (A01639-1) at a dilution of 1:200 and developed using HRP Conjugated Rabbit IgG Super Vision Assay Kit (Catalog # SV0002) with DAB (Catalog # AR1027) as the chromogen.



IF analysis of Cytokeratin 1/KRT1 using anti-Cytokeratin 1/KRT1 antibody (A01639-1).

Cytokeratin 1/KRT1 was detected in a paraffin-embedded section of mouse skin tissue. The tissue section was incubated with rabbit anti-Cytokeratin 1/KRT1 Antibody (A01639-1) at a dilution of 1:100. Cy3-conjugated Anti-rabbit IgG Secondary Antibody (red)(Catalog#BA1032) was used as secondary antibody. The section was counterstained with DAPI (Catalog # AR1176) (Blue).