

Basic Information

Product Name	Anti-Cytokeratin 1/KRT1 Antibody	
Gene Name	KRT1	
Source	Rabbit	
Clonality	Polyclonal	
Isotype	IgG	
Species Reactivity	human	
Tested Application	WB, IHC, IF, FCM, ELISA	
Contents	500 ug/ml antibody with PBS, 0.02% NaN ₃ , 1 mg/ml BSA and 50% glycerol.	
Immunogen	E.coli-derived human Cytokeratin 1/KRT1 recombinant protein (Position: L215-Q431).	
Concentration	500 ug/ml	
Purification	Immunogen affinity purified.	
Observed MW	66 kDa	
Dilution Ratios	Western blot (WB):	1:500-2000
	Immunohistochemistry (IHC):	1:50-400
	Immunofluorescence (IF):	1:50-400
	Flow Cytometry (Fixed):	1:50-200
	Enzyme linked immunosorbent assay (ELISA):	1:100-1000
	(Boiling the paraffin sections in 10mM citrate buffer, pH6.0, or PH8.0 EDTA repair liquid for 20 mins is required for the staining of formalin/paraffin sections.) Optimal working dilutions must be determined by end user.	

Storage

12 months from date of receipt, -20°C as supplied. 6 months 2 to 8°C after reconstitution. Avoid repeated freezing and thawing.

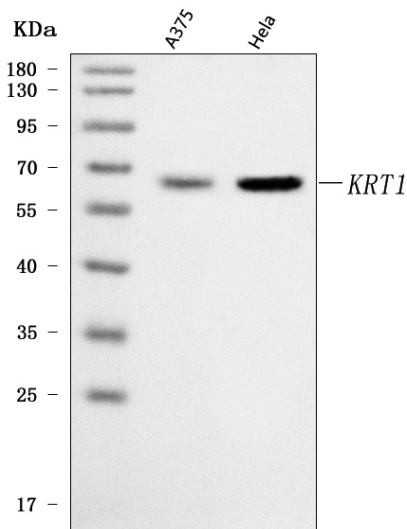
Background Information

Keratin 1 is a Type II intermediate filament (IFs) of the intracytoplasmatic cytoskeleton. The protein encoded by this gene is a member of the keratin gene family. The type II cytokeratins consist of basic or neutral proteins which are arranged in pairs of heterotypic keratin chains coexpressed during differentiation of simple and stratified epithelial tissues. This type II cytokeratin is specifically expressed in the spinous and granular layers of the epidermis with family member KRT10 and mutations in these genes have been associated with bullous congenital ichthyosiform erythroderma. The type II cytokeratins are clustered in a region of chromosome 12q12-q13.

Reference

Anti-Cytokeratin 1/KRT1 Antibody被引用在4文献中。

Selected Validation Data



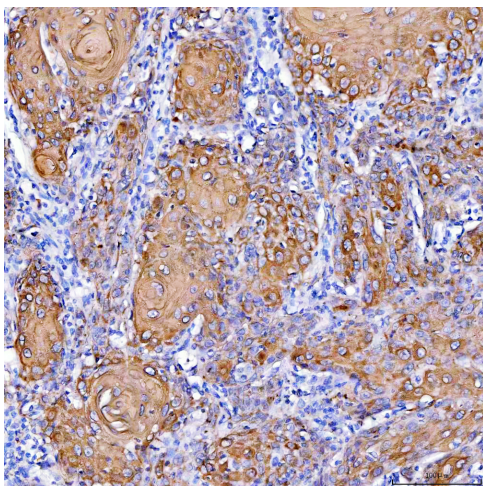
Western blot analysis of anti-Cytokeratin 1/KRT1 antibody (A01639). The sample well of each lane was loaded with 30ug of sample under reducing conditions.

Lane 1: human A375 whole cell lysates,

Lane 2: human HeLa whole cell lysates.

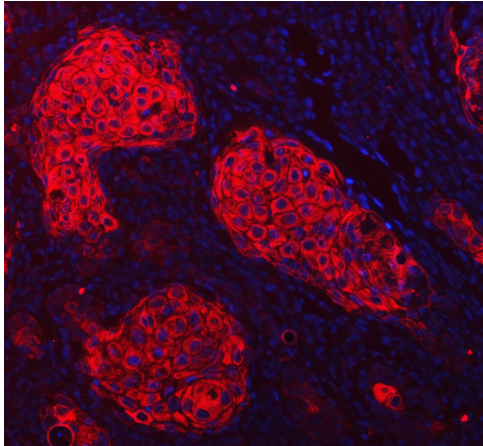
Use rabbit anti-Cytokeratin 1/KRT1 1:1000, probed with a goat anti-rabbit IgG-HRP secondary antibody. The signal is developed using an Enhanced Chemiluminescent detection (ECL) kit

(Catalog#EK1002). A specific band was detected for Cytokeratin 1/KRT1 at approximately 66KD. The expected band size for Cytokeratin 1/KRT1 is at 66KD.

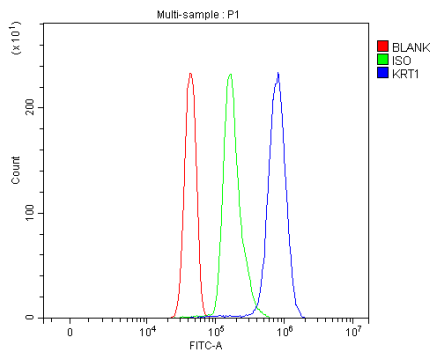


IHC analysis of Cytokeratin 1/KRT1 using anti-Cytokeratin 1/KRT1 antibody (A01639).

Cytokeratin 1/KRT1 was detected in a paraffin-embedded section of human skin cancer tissue. The tissue section was incubated with rabbit anti-Cytokeratin 1/KRT1 Antibody (A01639) at a dilution of 1:200 and developed using HRP Conjugated Rabbit IgG Super Vision Assay Kit (Catalog # SV0002) with DAB (Catalog # AR1027) as the chromogen.



IF analysis using anti- Cytokeratin 1/KRT1 antibody (A01639). detected in paraffin-embedded section of human skin cancer tissue. The tissue section were stained using the Dylight550-conjugated Anti-rabbit IgG Secondary Antibody (red)(Catalog#BA1135) and counterstained with DAPI (blue).



Flow Cytometry analysis of Jurkat cells using anti-Cytokeratin 1/KRT1 antibody (A01639).

Overlay histogram showing Jurkat cells stained with A01639 (Blue line). To facilitate intracellular staining, cells were fixed with 4% paraformaldehyde and permeabilized with permeabilization buffer. The cells were blocked with 10% normal goat serum. And then incubated with rabbit anti-Cytokeratin 1/KRT1 Antibody (A01639) at 1:100 dilution for 30 min at 20°C. DyLight®488 conjugated goat anti-rabbit IgG (BA1127) was used as secondary antibody at 1:100 dilution for 30 minutes at 20°C. Isotype control antibody (Green line) was rabbit IgG at 1:100 dilution used under the same conditions. Unlabelled sample without incubation with primary antibody and secondary antibody (Red line) was used as a blank control.