

## Basic Information

Product Name	Anti-CD1B Antibody	
Gene Name	CD1B	
Source	Rabbit	
Clonality	Polyclonal	
Isotype	IgG	
Species Reactivity	human	
Tested Application	WB, IHC	
Contents	500 ug/ml antibody with PBS, 0.02% NaN <sub>3</sub> , 1 mg/ml BSA and 50% glycerol.	
Immunogen	A synthetic peptide corresponding to a sequence at the N-terminus of human CD1b.	
Concentration	500 ug/ml	
Purification	Immunogen affinity purified.	
Observed MW	40 kDa	
Dilution Ratios	Western blot (WB): 1:500-2000 Immunohistochemistry (IHC): 1:50-400 (Boiling the paraffin sections in 10mM citrate buffer, pH6.0, or PH8.0 EDTA repair liquid for 20 mins is required for the staining of formalin/paraffin sections.) Optimal working dilutions must be determined by end user.	

## Storage

12 months from date of receipt, -20°C as supplied.

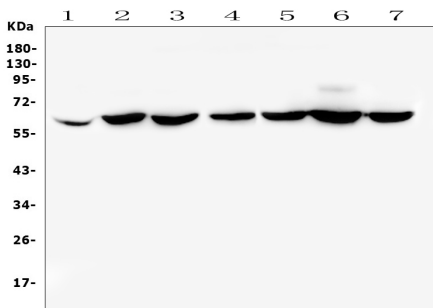
## Background Information

CD1B is a member of the CD1 family of transmembrane glycoproteins, which are structurally related to the major histocompatibility complex (MHC) proteins and form heterodimers with beta-2-microglobulin. The CD1 proteins mediate the presentation of primarily lipid and glycolipid antigens of self or microbial origin to T cells. The human genome contains five CD1 family genes organized in a cluster on chromosome 1. The CD1 family members are thought to differ in their cellular localization and specificity for particular lipid ligands. The protein encoded by this gene localizes to late endosomes and lysosomes via a tyrosine-based motif in the cytoplasmic tail, and requires vesicular acidification to bind lipid antigens.

## Reference

Anti-CD1B Antibody 被引用在1文献中。

## Selected Validation Data



Western blot analysis of CD1B using anti-CD1B antibody (A02158-1). The sample well of each lane was loaded with 30 ug of sample under reducing conditions.

Lane 1: human placenta tissue lysates,

Lane 2: human PC-3 whole cell lysates,

Lane 3: human SW620 whole cell lysates,

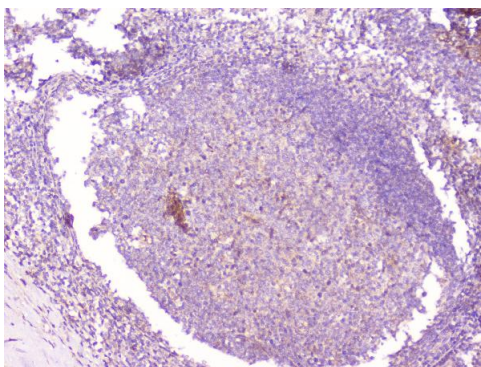
Lane 4: human THP-1 whole cell lysates,

Lane 5: human MDA-MB-231 whole cell lysates,

Lane 6: human K562 whole cell lysates,

Lane 7: human A431 whole cell lysates.

After electrophoresis, proteins were transferred to a membrane. Then the membrane was incubated with rabbit anti-CD1B antigen affinity purified polyclonal antibody (A02158-1) at a dilution of 1:1000 and probed with a goat anti-rabbit IgG-HRP secondary antibody (Catalog # BA1054). The signal is developed using ECL Plus Western Blotting Substrate (Catalog # AR1197). A specific band was detected for CD1B at approximately 40 kDa. The expected band size for CD1B is at 37 kDa.



IHC analysis of CD1B using anti-CD1B antibody (A02158-1).

CD1B was detected in a paraffin-embedded section of human tonsil tissue.

Biotinylated goat anti-rabbit IgG was used as secondary antibody. The

tissue section was incubated with rabbit anti-CD1B Antibody (A02158-1)

at a dilution of 1:200 and developed using Streptavidin-Biotin-Complex

(SABC) (Catalog # SA1022) with DAB (Catalog # AR1027) as the

chromogen.