

## Basic Information

Product Name	Anti-CD1B Antibody
Gene Name	CD1B
Source	Rabbit
Clonality	Polyclonal
Isotype	IgG
Species Reactivity	human, mouse, rat
Tested Application	WB, ELISA
Contents	500 ug/ml antibody with PBS, 0.02% NaN <sub>3</sub> , 1 mg/ml BSA and 50% glycerol.
Immunogen	E.coli-derived human CD1B recombinant protein (Position: D78-Y110).
Concentration	500 ug/ml
Purification	Immunogen affinity purified.
Observed MW	40 kDa
Dilution Ratios	Western blot (WB):1:500-2000 ELISA: 1:100-1000

## Storage

12 months from date of receipt, -20°C as supplied.

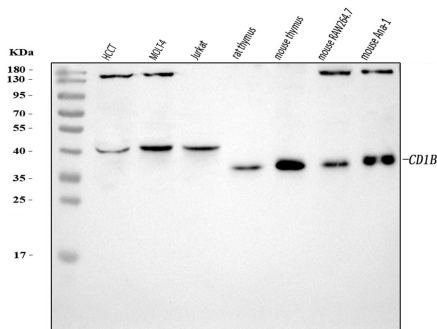
## Background Information

CD1B is a member of the CD1 family of transmembrane glycoproteins, which are structurally related to the major histocompatibility complex (MHC) proteins and form heterodimers with beta-2-microglobulin. The CD1 proteins mediate the presentation of primarily lipid and glycolipid antigens of self or microbial origin to T cells. The human genome contains five CD1 family genes organized in a cluster on chromosome 1. The CD1 family members are thought to differ in their cellular localization and specificity for particular lipid ligands. The protein encoded by this gene localizes to late endosomes and lysosomes via a tyrosine-based motif in the cytoplasmic tail, and requires vesicular acidification to bind lipid antigens.

## Reference

Anti-CD1B Antibody 被引用在1文献中。

## Selected Validation Data



Western blot analysis of CD1B using anti-CD1B antibody (A02158-2). The sample well of each lane was loaded with 30 ug of sample under reducing conditions.

Lane 1: HCCT whole cell lysates,

Lane 2: MOLT4 whole cell lysates,

Lane 3: Junkat whole cell lysates,

Lane 4: rat thymus tissue lysates,

Lane 5: mouse thymus tissue lysates,

Lane 6: mouse RAW264.7 whole cell lysates,

Lane 7: mouse Ana-1 whole cell lysates.

After electrophoresis, proteins were transferred to a membrane. Then the membrane was incubated with rabbit anti-CD1B antigen affinity purified polyclonal antibody (A02158-2) at a dilution of 1:1000 and probed with a goat anti-rabbit IgG-HRP secondary antibody (Catalog # BA1054). The signal is developed using ECL Plus Western Blotting Substrate (Catalog # AR1197). A specific band was detected for CD1B at approximately 40 kDa. The expected band size for CD1B is at 37 kDa.