

Basic Information

Product Name	Anti-CD8A Antibody	
Gene Name	CD8A	
Source	Rabbit	
Clonality	Polyclonal	
Isotype	IgG	
Species Reactivity	rat	
Tested Application	WB, IHC, ELISA	
Contents	500 ug/ml antibody with PBS, 0.02% NaN ₃ , 1 mg/ml BSA and 50% glycerol.	
Immunogen	E. coli-derived rat CD8 alpha/Cd8a recombinant protein (Position: Q27-Q114). Rat Cd8a shares 34.8% and 56.5% amino acid (aa) sequence identity with human and mouse Cd8a, respectively.	
Concentration	500 ug/ml	
Purification	Immunogen affinity purified.	
Observed MW	26 kDa	
Dilution Ratios	Western blot (WB): 1:500-2000 Immunohistochemistry (IHC): 1:50-400 ELISA: 1:100-1000 (Boiling the paraffin sections in 10mM citrate buffer, pH6.0, or PH8.0 EDTA repair liquid for 20 mins is required for the staining of formalin/paraffin sections.) Optimal working dilutions must be determined by end user.	

Storage

12 months from date of receipt, -20°C as supplied.

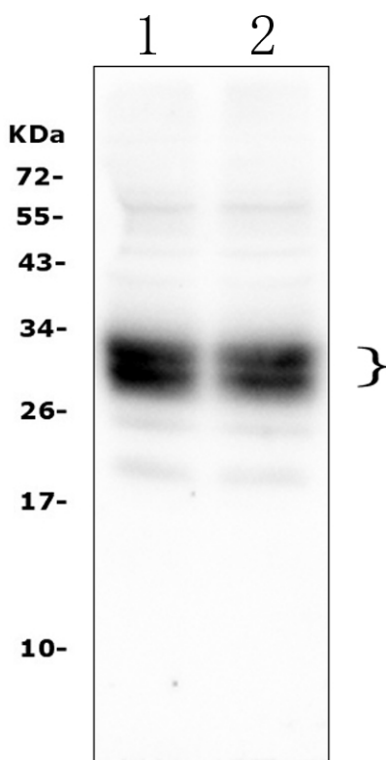
Background Information

The CD8 antigen is a cell surface glycoprotein found on most cytotoxic T lymphocytes that mediates efficient cell-cell interactions within the immune system. It is mapped to 2p11.2. The CD8 antigen, acting as a coreceptor, and the T-cell receptor on the T lymphocyte recognize antigen displayed by an antigen presenting cell (APC) in the context of class I MHC molecules. The functional coreceptor is either a homodimer composed of two alpha chains, or a heterodimer composed of one alpha and one beta chain. Both alpha and beta chains share significant homology to immunoglobulin variable light chains. This gene also encodes the CD8 alpha chain isoforms.

Reference

Anti-CD8A Antibody 被引用在2文献中。

Selected Validation Data

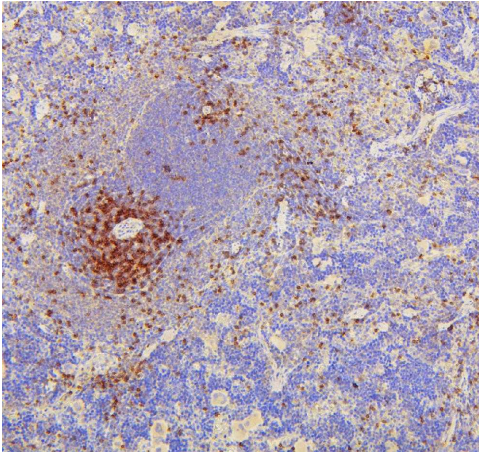


Western blot analysis of CD8A using anti-CD8A antibody (A02236-2). The sample well of each lane was loaded with 30 ug of sample under reducing conditions.

Lane 1: rat thymus issue lysates,

Lane 2: rat thymus issue lysates.

After electrophoresis, proteins were transferred to a membrane. Then the membrane was incubated with rabbit anti-CD8A antigen affinity purified polyclonal antibody (A02236-2) at a dilution of 1:1000 and probed with a goat anti-rabbit IgG-HRP secondary antibody (Catalog # BA1054). The signal is developed using ECL Plus Western Blotting Substrate (Catalog # AR1197). A specific band was detected for CD8A at approximately 35 kDa. The expected band size for CD8A is at 26 kDa.



IHC analysis of CD8A using anti-CD8A antibody (A02236-2).

CD8A was detected in a paraffin-embedded section of rat spleen tissue. Biotinylated goat anti-rabbit IgG was used as secondary antibody. The tissue section was incubated with rabbit anti-CD8A Antibody (A02236-2) at a dilution of 1:200 and developed using Streptavidin-Biotin-Complex (SABC) (Catalog # SA1022) with DAB (Catalog # AR1027) as the chromogen.