

## Basic Information

<b>Product Name</b>	Anti-2B4/CD244 Antibody
<b>Gene Name</b>	CD244
<b>Source</b>	Rabbit
<b>Clonality</b>	Polyclonal
<b>Isotype</b>	IgG
<b>Species Reactivity</b>	mouse
<b>Tested Application</b>	WB,ELISA
<b>Contents</b>	500 ug/ml antibody with PBS, 0.02% NaN <sub>3</sub> , 1 mg/ml BSA and 50% glycerol.
<b>Immunogen</b>	E.coli-derived mouse 2B4/Cd244 recombinant protein (Position: Q20-N374).
<b>Concentration</b>	500 ug/ml
<b>Purification</b>	Immunogen affinity purified.
<b>Observed MW</b>	42 kDa
<b>Dilution Ratios</b>	Western blot (WB):1:500-2000 ELISA: 1:100-1000

## Storage

12 months from date of receipt, -20°C as supplied. 6 months 2 to 8°C after reconstitution. Avoid repeated freezing and thawing.

## Background Information

CD244(Cluster of Differentiation 244) is a human protein encoded by the CD244 gene. It is also known as Natural Killer Cell Receptor 2B4. Tangye et al.(1999) mapped the 2B4 gene to 1q22. Suzuki et al.(2008) identified a functional single-nucleotide polymorphism(SNP) in the CD244 gene that contributes to rheumatoid arthritis susceptibility. Functional analysis by Boles et al.(1999) demonstrated that engagement of 2B4 with specific antibody activates NK cytolytic activity. Using recombinant human NK cell-activating ligand 2B4 fused to domains 3 and 4 of rodent Cd4 and flow cytometric analysis, Brown et al.(1998) demonstrated that CD48 binds to 2B4. Watzl et al.(2000) showed that antibody-mediated cross-linking of 2B4 leads to its rapid tyrosine phosphorylation, which is necessary for 2B4-mediated killer cell activity.

## Selected Validation Data

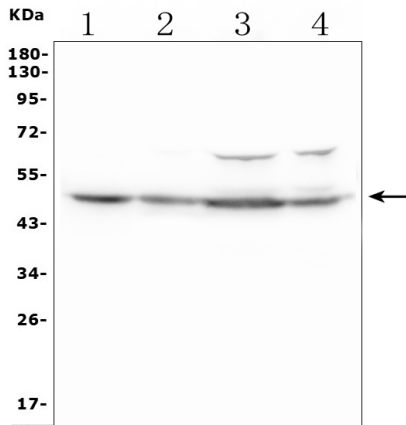


Figure 1. Western blot analysis of Cd244 using anti-Cd244 antibody (A02527-1).

Lane 1: mouse spleen tissue lysates,

Lane 2: mouse thymus tissue lysates,

Lane 3: mouse RAW246.7 whole cell lysates,

Lane 3: mouse SP20 whole cell lysates.

anti-Cd244 antigen affinity purified polyclonal antibody (Catalog # A02527-1) probed with a goat anti-rabbit IgG-HRP secondary antibody. The signal is developed using an Enhanced Chemiluminescent detection (ECL) kit (Catalog # EK1002). A specific band was detected for Cd244 at approximately 50 kDa. The expected band size for Cd244 is at 42 kDa.