

Basic Information

Product Name	Anti-THBS2 Antibody
Gene Name	THBS2
Source	Rabbit
Clonality	Polyclonal
Isotype	IgG
Species Reactivity	mouse, rat
Tested Application	WB
Contents	500 ug/ml antibody with PBS, 0.02% NaN ₃ , 1 mg/ml BSA and 50% glycerol.
Immunogen	A synthetic peptide corresponding to a sequence at the N-terminus of mouse Thrombospondin 2, which shares 86.6% amino acid (aa) sequence identity with human Thrombospondin 2.
Concentration	500 ug/ml
Purification	Immunogen affinity purified.
Observed MW	160 kDa
Dilution Ratios	Western blot (WB):1:500-2000

Storage

12 months from date of receipt, -20°C as supplied. 6 months 2 to 8°C after reconstitution. Avoid repeated freezing and thawing.

Background Information

Thrombospondin-2 (THBS2) is a protein that in humans is encoded by the THBS2 gene. The protein encoded by this gene belongs to the thrombospondin family. The THBS2 is mapped to 6q27 and it is located on chromosome 17. The gene was transcribed in fibroblasts, smooth muscle cells, and an osteosarcoma cell line. It functions as a protein inhibitor of tumor growth and angiogenesis and modulates the cell surface properties of mesenchymal cells and be involved in cell adhesion and migration.

Reference

Anti-THBS2 Antibody被引用在1文献中。

Selected Validation Data

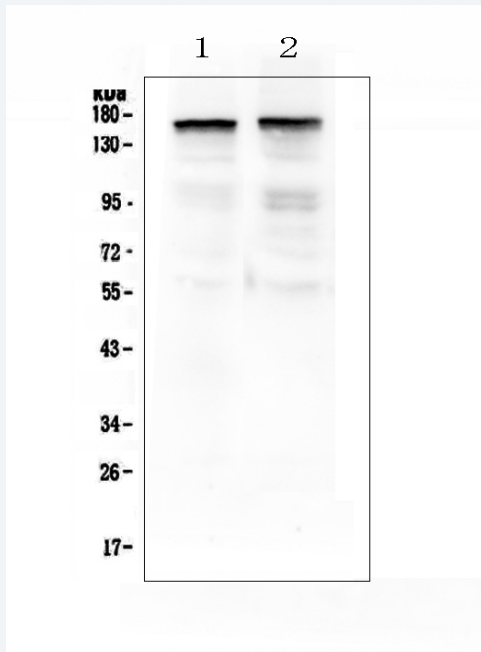


Figure 1. Western blot analysis of Thrombospondin 2 using anti-Thrombospondin 2 antibody (A03253-1). The sample well of each lane was loaded with 50ug of sample under reducing conditions. Lane 1: rat brain tissue lysates, Lane 2: mouse brain tissue lysates. -Thrombospondin 2 antigen affinity purified polyclonal antibody (Catalog # A03253-1) at 0.5 $\mu\text{g}/\text{mL}$ overnight at 4°C, then washed with TBS-0.1%Tween 3 times with 5 minutes each and probed with a goat anti-rabbit IgG-HRP secondary antibody . The signal is developed using an Enhanced Chemiluminescent detection (ECL) kit (Catalog # EK1002) A specific band was detected for Thrombospondin 2 at approximately 160KD. The expected band size for Thrombospondin 2 is at 130KD.